



[OFP]

OFP 9/0/1-11 SEP-PREPARED BY: M.WATERS TXL-TEL:1 800 555 0199

CAT0012/CAT0012 N537SB/752 SELCAL/ ROUTE: DEF RTE

DEP: LEBL 07L ELEV 14 FT COST INDEX: TTL G/C DIST: 3321NM
 ARR: KJFK 22R ELEV 14 FT SPEED: M.80 TTL F/P DIST: 3359NM
 ALT: KBOS 27 PERF: 0.0% TTL ADIST: 3606NAM
 INIT FL/TEMP: 340/M48

TKOF ALT: AVGE WC: M031

CODES	PAX	CARGO	PTTL	UNDL	:
105	180	0	32900	0T	:
DOM					
132500	MAL	ZFM 184000	TOM 240000	LAM 198000	:
	PLN	165400	240000	179099	:
	ACT	:

SIGNATURE COMMANDER

ROUTING: N0468F340 DCT LOBAR UN725 SUSOS DCT STG DCT KOPAS/M080F340
 DCT 4620N/M080F360 DCT 4730N DCT 4740N DCT 4650N/N0469F360
 DCT 4460N/N0465F380 DCT WHALE DCT ACK J68 PVD DCT PARCH DCT

ATIS:

FUEL	CORR.	ENDUR:	ANALYSED TRIP FUEL:
060901	0757	NO DATA AVAILABLE FOR THIS FLIGHT
003945	0033	
005029	0034	
004725	0045	
74600	0958	
1000	0010	

TRIP FUEL
 CONT 10%
 ALT / KBOS
 FINAL RES
 ADDFU
 PLNTOF
 ALT DIFF
 EXTRA / POSS 0T
 ACTTOF
 TAXI
 BLOCK / MTCAP 75600

NO TANKERING RECOMMENDED
 DISPATCH DEFINED

ZFM INCR 1000 LB: TF +314 LB ZFM DECR 1000 LB: TF -229 LB
 2000 FT BELOW: TF +555 LB / EET 07.52

.....ALTERNATE INFO.....

ALTN/RWY	TYPE	DIST	COMP/LVL	TIME/PNLTY	FUEL/PNLTY	F.RES
KBOS/27	-	0162	P009/230	0034/-	005029/-	004725

KBOS/ DCT



.....
LEBL/BCN STD 1714 ETD 1714 OFB EST TOF 1724 TOF
KJFK/JFK STA 0214 ETA 0127 ONB EST LDG 0121 LDG
 HRS 0900 0813 BLOCK FLIGHT



AWY -BDRY	WAYPOINT MORA	AVTT W/V	SPD	GS TAS	FL TP	TMP	R/DST	MIN	ACC	ETO/ATO RF/FU
.....	LEBL/07L						3359/84			
		09/007								74.6/1.0
LOBAR	LOBAR		290		CLB	P06	3275/07	014	0014	.../...
	80	29/038								69.2/6.4
UN725	DIRMU		290		CLB	P05	3268/08	001	0015	.../...
	59	29/038								68.8/6.8
UN725	TOC		800		CLB	P05	3260/16	001	0016	.../...
	59	29/038								68.5/7.1
UN725	VAKIN	287	800	430	340	-48	3244/21	003	0019	.../...
-LECM	55	29/038		468	402					68.2/7.4
UN725	ZARKO	287	800	431	340	-48	3223/26	003	0022	.../...
	132	28/037		468	402					67.8/7.8
UN725	LARDA	286	800	431	340	-48	3197/30	003	0025	.../...
	132	28/037		468	402					67.3/8.3
UN725	VASUM	286	800	430	340	-48	3167/40	004	0029	.../...
	98	28/038		468	403					66.7/8.9
UN725	DGO	286	800	430	340	-48	3127/51	006	0035	.../...
	98	28/038		468	405					66.0/9.6
UN725	RATAS	278	800	433	340	-48	3076/43	007	0042	.../...
	106	27/035		468	403					65.0/10.6
UN725	NUBLO	277	800	433	340	-48	3033/20	006	0048	.../...
	106	26/036		468	404					64.3/11.3
UN725	SUSOS	277	800	433	340	-48	3013/132	003	0051	.../...
	106	26/036		468	404					63.9/11.7
DCT	STG	276	800	435	340	-48	2881/209	018	0109	.../...
	95	24/041		468	401					61.5/14.1
DCT	KOPAS	289	800	446	340	-49	2672/320	028	0137	.../...
-EGGX	58	23/042		467	389					57.8/17.8
DCT	4620N	294	800	462	340	-51	2352/417	042	0219	.../...
	20	22/013		465	364					52.4/23.2
DCT	4730N	281	800	459	*360	-49	1935/409	054	0313	.../...
-CZQX	20	00/036		467	442					45.6/30.0
DCT	4740N	273	800	420	360	-49	1526/417	059	0412	.../...
	20	23/058		467	446					38.5/37.1
DCT	4650N	265	800	413	360	-47	1109/441	060	0512	.../...
-CZQM	20	28/057		469	507					31.2/44.4
DCT	4460N	257	800	415	360	-47	668/325	064	0616	.../...
	20	30/070		469	474					23.7/51.9
DCT	WHALE	252	800	445	*380	-51	343/146	044	0700	.../...
-KZBW	20	30/028		465	492					19.0/56.6



DCT	ACK	248	800	458	380	-50	197/68	019	0719	.../...
	20	31/016		466	496					16.9/58.7
J68										
	PVD	293	800	438	380	-51	129/08	009	0728	.../...
	27	29/027		465	492					15.9/59.7
DCT										
	TOD	219	800	451	380	-51	121/41	001	0729	.../...
	27	28/028		465	493					15.8/59.8
DCT										
-KZNY	PARCH		290		DSC	P14	080/80	006	0735	.../...
	42	30/013								15.4/60.2
DCT										
	KJFK/22R				DSC		000	022	0757	.../...
	42	26/008								13.7/61.9



.....WIND INFORMATION.....

CLIMB			TOC			VAKIN			ZARKO		
350	287/039	-50	380	289/039	-56	380	289/039	-56	380	283/039	-56
310	285/038	-41	360	288/039	-52	360	288/039	-52	360	284/038	-52
200	292/027	-14	340	286/038	-48	340	286/038	-48	340	284/037	-48
150	286/023	-04	320	285/038	-43	320	285/038	-43	320	284/035	-43
100	287/020	+06	300	284/037	-38	300	284/037	-38	300	284/034	-38

LARDA			VASUM			DGO			RATAS		
380	283/039	-56	380	281/039	-56	380	280/040	-56	380	270/040	-56
360	284/038	-52	360	281/038	-52	360	279/039	-52	360	269/037	-52
340	284/037	-48	340	281/038	-48	340	277/038	-48	340	268/035	-48
320	284/035	-43	320	281/036	-43	320	276/037	-43	320	267/034	-43
300	284/034	-38	300	281/034	-38	300	274/035	-38	300	266/033	-38

NUBLO			SUSOS			STG			KOPAS		
380	263/041	-56	380	263/041	-56	380	240/045	-55	380	226/035	-54
360	262/039	-52	360	262/039	-52	360	239/043	-52	360	226/038	-51
340	260/036	-48	340	260/036	-48	340	237/041	-48	340	227/042	-49
320	258/035	-43	320	258/035	-43	320	236/038	-43	320	224/038	-44
300	257/033	-38	300	257/033	-38	300	234/035	-38	300	221/034	-39

4620N			4730N			4740N			4650N		
380	258/006	-51	400	359/034	-57	400	233/052	-56	400	279/059	-50
360	228/009	-51	380	358/036	-54	380	232/056	-53	380	279/059	-49
340	216/013	-51	360	000/036	-49	360	234/058	-49	360	277/057	-47
320	224/008	-46	340	002/035	-45	340	236/060	-45	340	274/055	-46
300	248/004	-41	320	007/034	-41	320	238/052	-41	320	273/053	-44

4460N			WHALE			ACK			PVD		
400	295/068	-54	420	294/029	-59	420	294/015	-59	420	285/027	-59
380	296/070	-50	400	297/030	-55	400	306/016	-55	400	285/027	-55
360	300/070	-47	380	297/028	-51	380	309/016	-50	380	286/027	-51
340	304/071	-43	360	293/024	-46	360	306/016	-46	360	287/026	-47
320	294/067	-39	340	288/020	-42	340	302/016	-42	340	288/026	-43

TOD			DESCENT		
420	281/027	-59	350	296/015	-45
400	280/028	-55	310	314/015	-35
380	280/028	-51	200	279/017	-11
360	282/027	-47	150	290/019	-01
340	284/025	-43	100	308/013	+08



[ATC Flight Plan]

FF LECBZQZX LECMZQZX LPPOZQZX EGGXZQZX CZQXZQZX CZQMZQZX KZBWZQZX
KZNYZQZX
 EDDTSBAB
(FPL-CAT012-IS
-B752/M-SDE3FHIM3RWZ/LB1
-LEBL1714
-N0468F340 DCT LOBAR UN725 SUSOS DCT STG DCT KOPAS/M080F340 DCT
4620N/M080F360 DCT 4730N DCT 4740N DCT 4650N/N0469F360 DCT
4460N/N0465F380 DCT WHALE DCT ACK J68 PVD DCT PARCH DCT
-KJFK0757 KBOS
-PBN/A1B3B4B5C4D4O4 NAV/RNVD1E2A1 DAT/V DOF/140911 REG/N537SB
EET/LECM0019 LPPO0137 EGGX0158 CZQX0314 CZQM0553 KZBW0700 KZNY0750
CODE/IZ8J6P OPR/CAT RVR/075 RMK/TCAS)



[Additional Info]

D I S P A T C H B R I E F I N G I N F O CAT012 LEBL/KJFK



[Weather]

 LEBL --> KJFK CAT 012 / 11SEP2014
 LIDO/WEATHER SERVICE DATE : 05Sep2014 TIME : 06:36 UTC

AIRMETs:
 No Wx data available

SIGMETs:
 No Wx data available

Tropical Cyclone SIGMETs:
 No Wx data available

Volcanic Ash SIGMETs:
 No Wx data available

Destination:
 KJFK/JFK KENNEDY INTL
 SA 050551 22006KT 10SM FEW250 22/20 A3016 RMK AO2 SLP212
 T02220200 10250 20222 56002
 FT 050528 0506/0612 21006KT P6SM FEW080
 FM050700 VRB04KT P6SM SKC
 FM051300 18008KT P6SM FEW250
 FM051800 17015KT P6SM SCT040
 FM060100 20008KT P6SM FEW010 SCT040
 FM060800 22006KT P6SM SCT010 BKN035

Destination Alternates:
 KBOS/BOS LOGAN INTL
 SA 050554 24009KT 10SM CLR 23/16 A3013 RMK AO2 SLP203 T02280156
 10267 20222 53001
 FT 050540 0506/0612 23008KT P6SM FEW250
 FM051800 21012KT P6SM FEW250
 FM060500 22010KT P6SM FEW010
 FM060900 22007KT 6SM BR SCT010

Departure:
 LEBL/BCN EL PRAT
 SA 050600 05002KT 9999 FEW028 23/21 Q1014 NOSIG
 FT 050602 0506/0606 14005KT 9999 SCT018 TX27/0512Z TN23/0506Z
 BECMG 0508/0511 11009KT
 PROB40
 TEMPO 0512/0521 FEW025CB
 TEMPO 0516/0520 06010KT
 BECMG 0519/0521 VRB04KT

AIRPORTLIST ENDED



[Crew Alert & Bulletin]

=====

CREW ALERT

=====

SF005/13 VALID: 05-DEC-13 0002 - UFN

SF005/13 COMPANY NOTAM

IN RARE CASES, DETAILED MAP GENERATION HAS BEEN FAILING DUE TO AN "INSUFFICIENT MEMORY" ERROR. THIS OCCURS WHEN THE WEB HOST REDUCES THE MAXIMUM ALLOWABLE SCRIPT MEMORY FOR ONE REASON OR ANOTHER. WHILE THESE OUTAGES ARE NORMALLY SHORT LIVED, I WILL CONTINUE TO MONITOR THE LOGS TO MAKE SURE THEY DON'T BECOME TOO COMMON.

SB004/13 VALID: 05-OCT-13 2005 - UFN
SB004/13 COMPANY NOTAM
WHILE WIND FETCH ERRORS ARE RARE, PILOTS SHOULD STILL BE AWARE OF
THEIR NEGATIVE EFFECT ON FLIGHT PLAN ACCURACY. "WARNING: WIND
FETCH FAILED, ASSUMED ISA CONDITIONS" WILL BE DISPLAYED ON ANY
FLIGHT PLAN WHICH FAILS TO DOWNLOAD THE WINDS ALOFT. THE RESULTING
FLIGHT PLAN WILL BE LESS ACCURATE AS THE SYSTEM WILL REVERT TO A
STANDARD ATMOSPHERE MODEL. IT IS RECOMMENDED TO RE-GENERATE THE
FLIGHT PLAN WHEN SUCH AN ERROR OCCURS TO OBTAIN A MORE ACCURATE
QFP.

S
B003/13 COMPANY NOTAM

VALID: 13-JUL-13 0320 - UFN

ALL FLIGHT CREW: PLEASE PAY SPECIAL ATTENTION TO THE UNITS SELECTION WHEN GENERATING A FLIGHT PLAN. FAILURE TO IDENTIFY THE CORRECT UNITS WHEN REFUELING PRIOR TO FLIGHT CAN RESULT IN DEPARTING WITH INSUFFICIENT FUEL AND/OR AN ERRONEOUS PAYLOAD.

=====

CREW BULLETIN

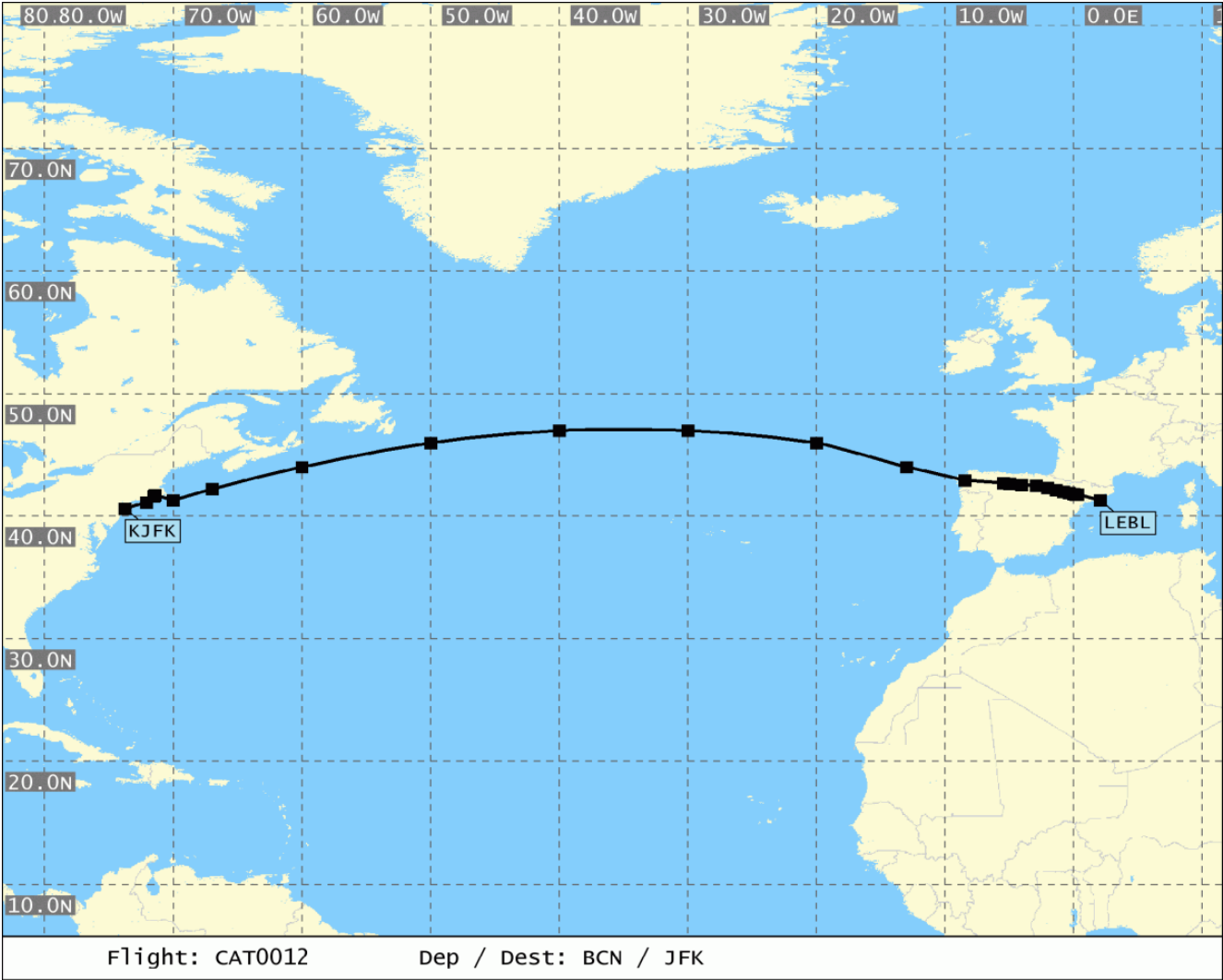
=====

NIL

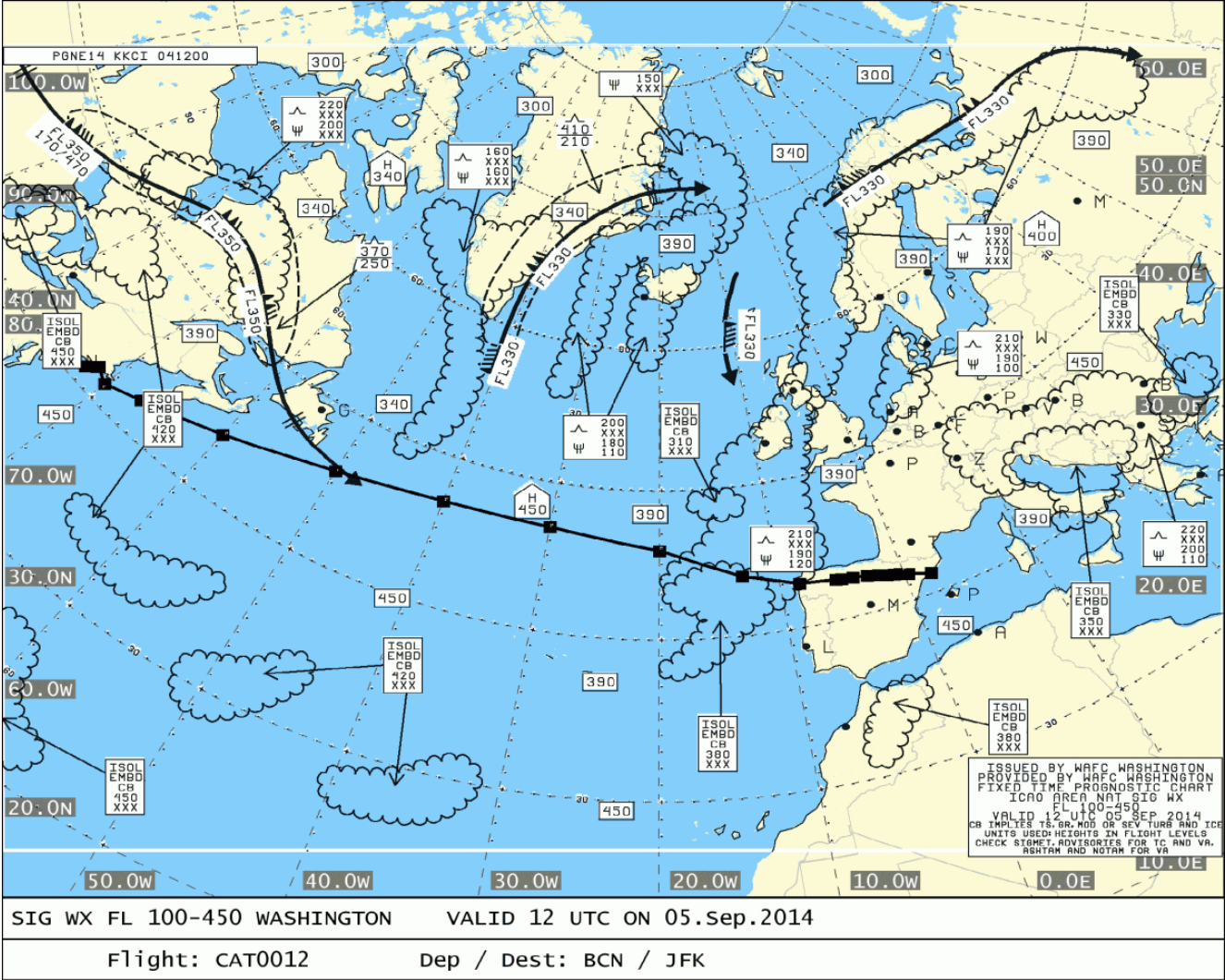
===== END OF LIDO-NOTAM-BULLETIN =====



Route

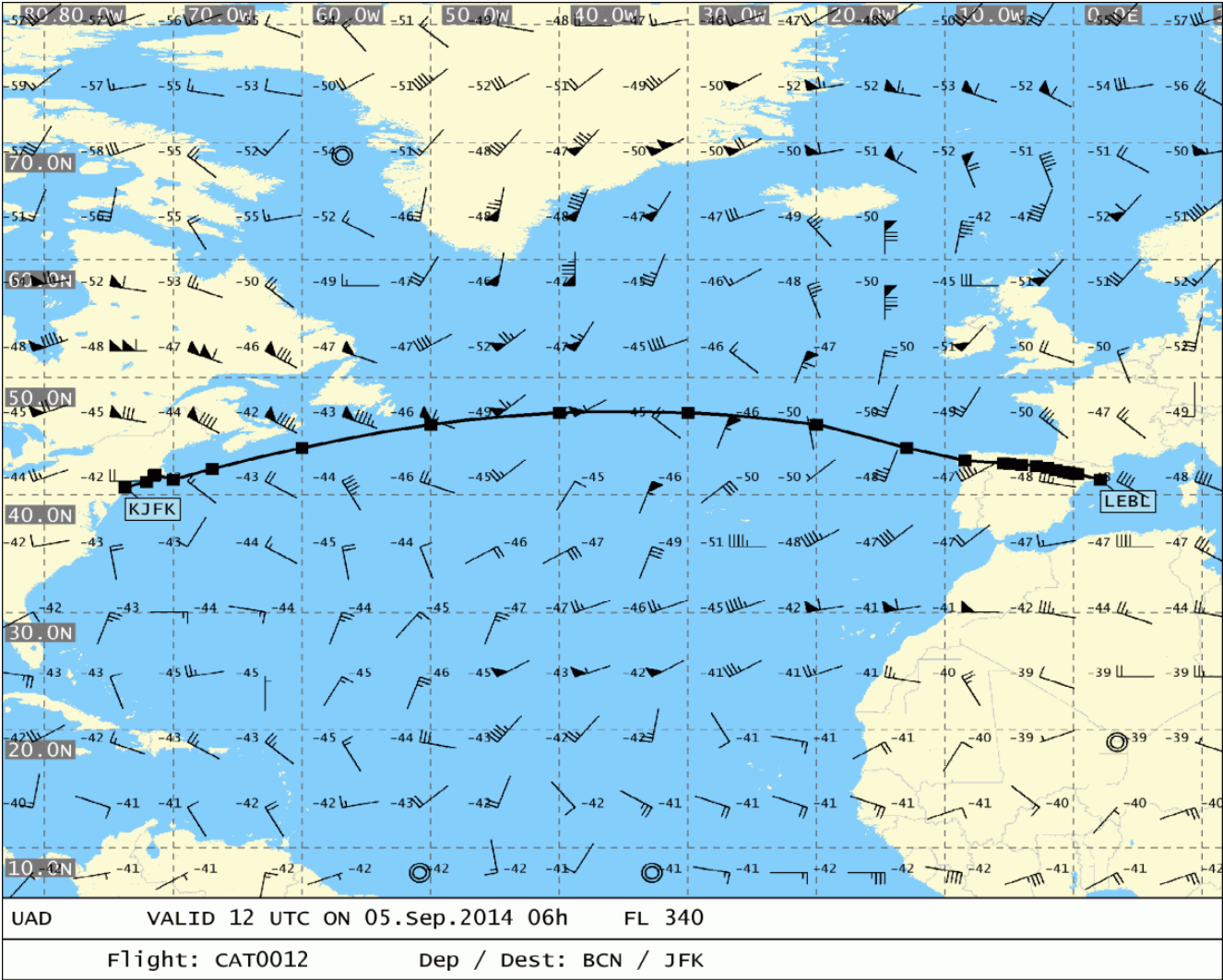


SigWx 1 of 1





UAD 1 of 2





UAD 2 of 2

