



CAT012/11SEP14/BCN/JFK

BY SIGNING BELOW I AM AFFIRMING THAT I AM FIT FOR DUTY PER
14 CFR 117.5(D)

CAPTAIN

crewmember #

FIRST OFFICER

crewmember #

ADDITIONAL CREWMEMBER (OPTIONAL)

crewmember #



CAT012 - DISPATCH RELEASE



CAT012 - FLIGHT PLAN

TIME COMPUTED 0640

-----ATC FLIGHT PLAN-----

(FPL-CAT012-IS

-B752/M-SDE3FHIM3RWZ/LB1

-LEBL1714

-N0468F340 DCT LOBAR UN725 SUSOS DCT STG DCT KOPAS/M080F340

DCT 4620N/M080F360 DCT 4730N DCT 4740N DCT 4650N/N0469F360

DCT 4460N/N0465F380 DCT WHALE DCT ACK J68 PVD DCT PARCH DCT

-KJFK0757 KBOS

-PBN/A1B3B4B5C4D4O4 NAV/RNVD1E2A1 REG/N537SB EET/LECM0019

LPPO0137 EGGX0158 CZQX0314 CZQM0553 KZBW0700 KZNY0750)

FL PROFILE:

TOC 340 4620N 360 4460N 380

TROP INFO: CLB:402 TOC:402 DSC:493

----- ALTERNATE SUMMARY -----

ALTN 1: FUEL TIME DIST ALT AVG WND

KBOS 5.0 0034 162 FL230 292/021

ROUTE: KJFK DCT KBOS

----- NAVIGATION LOG - FLT 012 /11SEP14 -----

WYPT	FREQ	AWY	IAS	MCH	MC	ALT	WND	ALT	SEGD	FRMN	TTREM	ETA	/	ATA
LAT	LONG	TAS	G/S	HDG	TMP	DTGO	TBRN	TTIME	SEGT					

LEBL		DCT	---	---	290	---	---	---	0	74.6	07+57	/
N41	17.8	E002	04.7	---	---	290	---		3359	----	00+00			00+00

LOBAR		UN725	---	---	288	CLB	286/038		84	69.2	07+43	/
N41	44.9	E000	19.1	---	---	288	---		3275	5.4	00+14			00+14

DIRMU		UN725	---	---	287	CLB	286/038		7	68.8	07+42	/
N41	47.1	E000	09.6	---	---	287	---		3268	5.8	00+15			00+01

TOC		UN725	278	.80	287	340	286/038		8	68.5	07+40	/
N41	49.5	W000	00.7	468	430	287	M48		3260	6.1	00+16			00+01

VAKIN		UN725	278	.80	288	340	286/038		16	68.2	07+38	/
N41	54.3	W000	21.2	468	430	288	M48		3244	6.4	00+19			00+03

ZARKO		UN725	278	.80	287	340	284/037		21	67.8	07+35	/
N42	00.3	W000	47.6	468	431	287	M48		3223	6.8	00+22			00+03

LARDA		UN725	278	.80	287	340	284/037		26	67.3	07+32	/
N42	07.9	W001	21.7	468	431	287	M48		3197	7.3	00+25			00+03

VASUM		UN725	278	.80	288	340	281/038		30	66.7	07+28	/
N42	16.3	W002	00.7	468	430	287	M48		3167	7.9	00+29			00+04

DGO		UN725	278	.80	280	340	277/038		40	66.0	07+22	/
N42	27.2	W002	52.8	468	430	279	M48		3127	8.6	00+35			00+06

RATAS		UN725	278	.80	279	340	268/035		51	65.0	07+15	/
N42	34.5	W004	01.8	468	433	278	M48		3076	9.6	00+42			00+07

NUBLO		UN725	278	.80	279	340	260/036		43	64.3	07+09	/
N42	40.0	W004	59.3	468	433	278	M48		3033	10.3	00+48			00+06



SUSOS	DCT	278	.80	279	340	260/036	20	63.9	07+06 /
N42 42.4	W005 26.6	468	433	276	M48		3013	10.7	00+51	00+03
STG	DCT	278	.80	294	340	237/041	132	61.5	06+48 /
N42 55.6	W008 25.5	468	435	289	M48		2881	13.1	01+09	00+18
KOPAS	DCT	278	.80	302	340	227/042	209	57.8	06+20 /
N44 00.0	W013 00.0	467	446	300	M49		2672	16.8	01+37	00+28
4620N	DCT	278	.80	294	340	216/013	320	52.4	05+38 /
N46 00.0	W020 00.0	465	462	298	M51		2352	22.2	02+19	00+42
4730N	DCT	266	.80	289	360	000/036	417	45.6	04+44 /
N47 00.0	W030 00.0	467	459	285	M49		1935	29.0	03+13	00+54
4740N	DCT	266	.80	283	360	234/058	409	38.5	03+45 /
N47 00.0	W040 00.0	467	420	284	M49		1526	36.1	04+12	00+59
4650N	DCT	266	.80	275	360	277/057	417	31.2	02+45 /
N46 00.0	W050 00.0	469	413	281	M47		1109	43.4	05+12	01+00
4460N	DCT	266	.80	269	360	300/070	441	23.7	01+41 /
N44 00.0	W060 00.0	469	415	271	M47		668	50.9	06+16	01+04
WHALE	DCT	254	.80	263	380	297/028	325	19.0	00+57 /
N42 11.9	W067 00.0	465	445	265	M51		343	55.6	07+00	00+44
ACK	J68	254	.80	308	380	309/016	146	16.9	00+38 /
N41 16.9	W070 01.6	466	458	308	M50		197	57.7	07+19	00+19
PVD	DCT	254	.80	234	380	286/027	68	15.9	00+29 /
N41 43.5	W071 25.8	465	438	237	M51		129	58.7	07+28	00+09
TOD	DCT	254	.80	233	380	280/028	8	15.8	00+28 /
N41 37.3	W071 32.5	465	451	235	M51		121	58.8	07+29	00+01
PARCH	DCT	---	---	263	DSC	300/013	41	15.4	00+22 /
N41 06.0	W072 07.2	---	---	263	---		80	59.2	07+35	00+06
KJFK		---	---	---	---	--- / ---	80	13.7	00+00 /
N40 38.4	W073 46.7	---	---	---	---		0	60.9	07+57	00+22

END OF PLAN



BRIEFING GENERATED 05SEP14 0640 UTC

CAT012

FLT 012 BCN-JFK

COMPANY NOTAM - SB005/13

IN RARE CASES, DETAILED MAP GENERATION HAS BEEN FAILING DUE TO AN "INSUFFICIENT MEMORY" ERROR. THIS OCCURS WHEN THE WEB HOST REDUCES THE MAXIMUM ALLOWABLE SCRIPT MEMORY FOR ONE REASON OR ANOTHER. WHILE THESE OUTAGES ARE NORMALLY SHORT LIVED, I WILL CONTINUE TO MONITOR THE LOGS TO MAKE SURE THEY DON'T BECOME TOO COMMON.

COMPANY NOTAM - SB004/13

WHILE WIND FETCH ERRORS ARE RARE, PILOTS SHOULD STILL BE AWARE OF THEIR NEGATIVE EFFECT ON FLIGHT PLAN ACCURACY. "WARNING: WIND FETCH FAILED, ASSUMED ISA CONDITIONS" WILL BE DISPLAYED ON ANY FLIGHT PLAN WHICH FAILS TO DOWNLOAD THE WINDS ALOFT. THE RESULTING FLIGHT PLAN WILL BE LESS ACCURATE AS THE SYSTEM WILL REVERT TO A STANDARD ATMOSPHERE MODEL. IT IS RECOMMENDED TO RE-GENERATE THE FLIGHT PLAN WHEN SUCH AN ERROR OCCURS TO OBTAIN A MORE ACCURATE OFP.

COMPANY NOTAM - SB003/13

ALL FLIGHT CREW: PLEASE PAY SPECIAL ATTENTION TO THE UNITS SELECTION WHEN GENERATING A FLIGHT PLAN. FAILURE TO IDENTIFY THE CORRECT UNITS WHEN REFUELING PRIOR TO FLIGHT CAN RESULT IN DEPARTING WITH INSUFFICIENT FUEL AND/OR AN ERRONEOUS PAYLOAD.

LEBL 050600Z 05002KT 9999 FEW028 23/21 Q1014 NOSIG

LEBL 050602Z 0506/0606 14005KT 9999 SCT018 TX27/0512Z TN23/0506Z
BECMG 0508/0511 11009KT
PROB40
TEMPO 0512/0521 FEW025CB
TEMPO 0516/0520 06010KT
BECMG 0519/0521 VRB04KT

KJFK 050551Z 22006KT 10SM FEW250 22/20 A3016 RMK AO2 SLP212
T02220200 10250 20222 56002

KJFK 050528Z 0506/0612 21006KT P6SM FEW080
FM050700 VRB04KT P6SM SKC
FM051300 18008KT P6SM FEW250
FM051800 17015KT P6SM SCT040
FM060100 20008KT P6SM FEW010 SCT040
FM060800 22006KT P6SM SCT010 BKN035

PAGE 01 05SEP14

CAT 0012 LEBL/KJFK 05.SEP.2014/0640Z



CAT012 FLT 012 BCN-JFK

KBOS 050554Z 24009KT 10SM CLR 23/16 A3013 RMK AO2 SLP203 T02280156
10267 20222 53001
KBOS 050540Z 0506/0612 23008KT P6SM FEW250
FM051800 21012KT P6SM FEW250
FM060500 22010KT P6SM FEW010
FM060900 22007KT 6SM BR SCT010

LEBL WS NIL

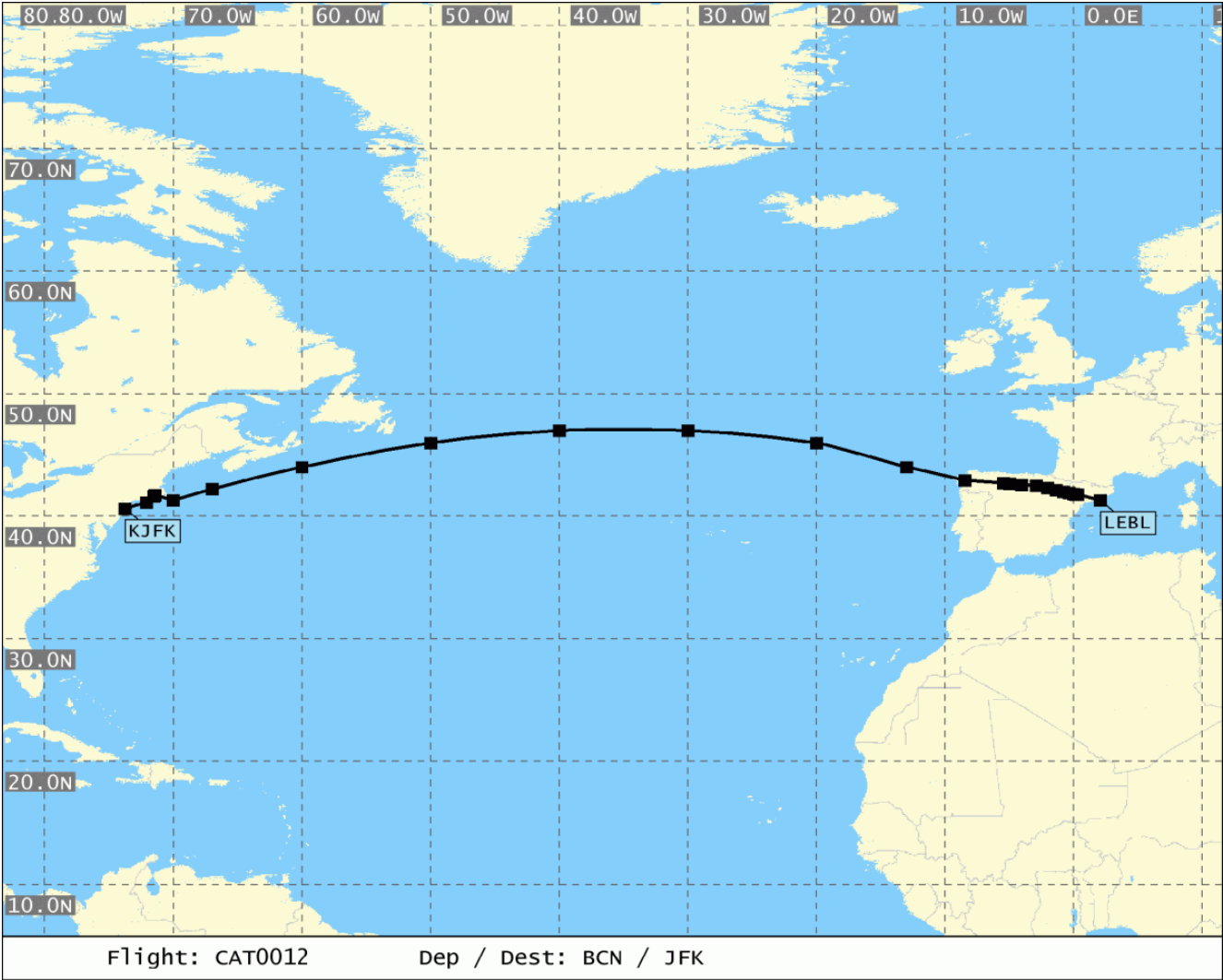
KJFK WS NIL

KBOS WS NIL

PAGE 02 05SEP14
END BRIEFING

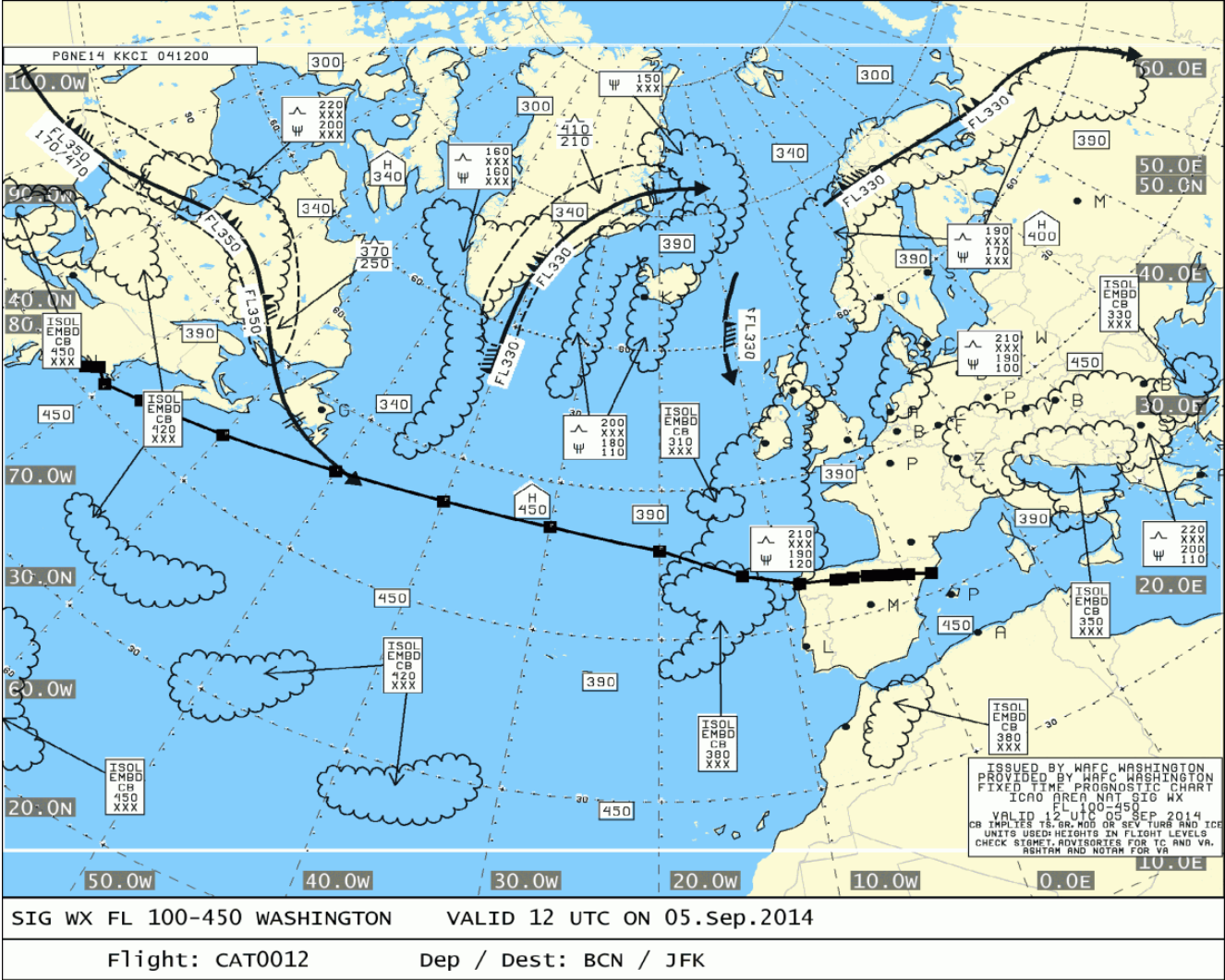


Route



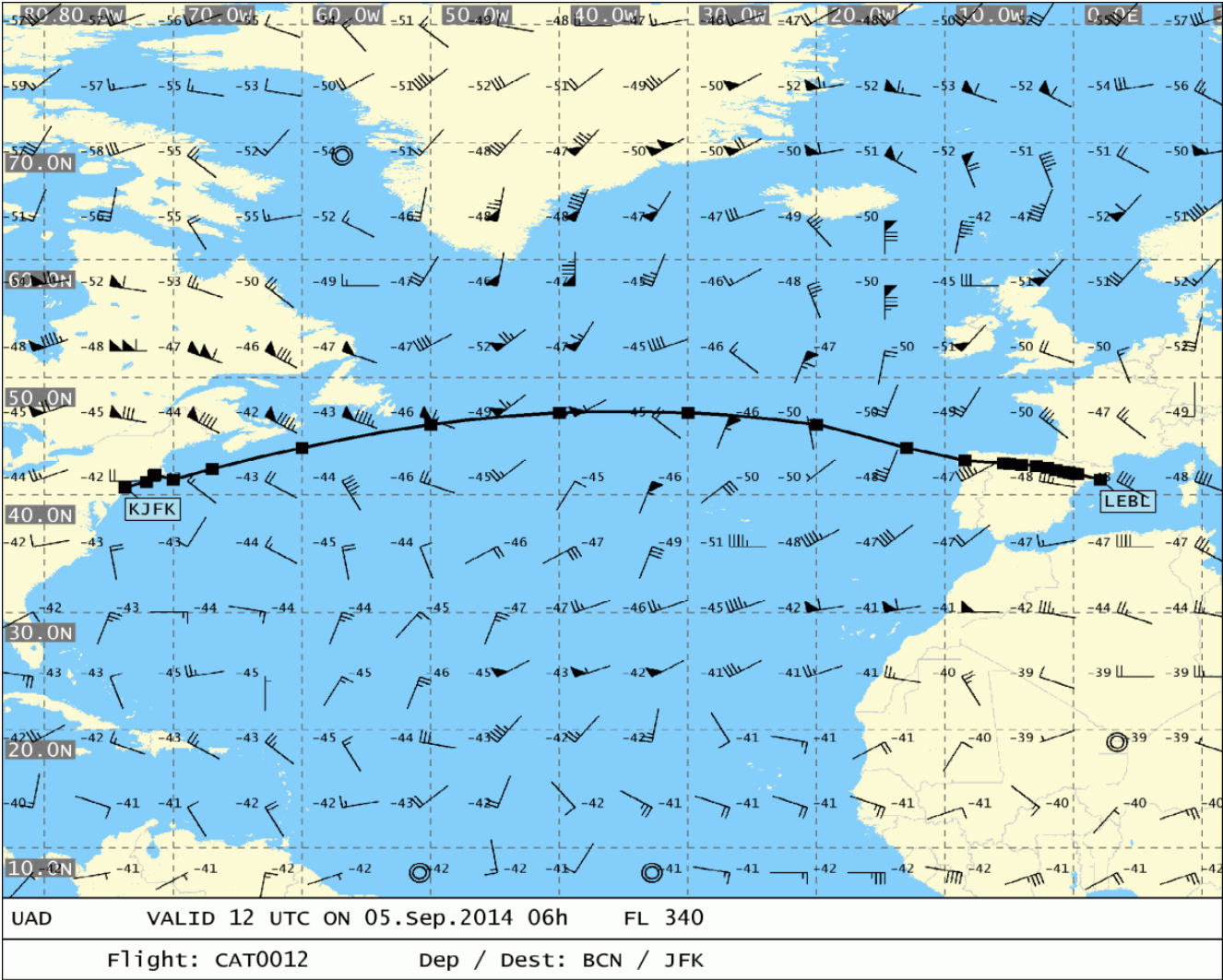


SigWx 1 of 1





UAD 1 of 2





UAD 2 of 2

