



CAT012 11SEP LEBL/BCN-KJFK/JFK B757-200-537 CAPT:
SIGNATURE:

ATC CLRNC:
DEFRTE : LEBL/07L DCT LOBAR UN725 SUSOS DCT STG DCT KOPAS DCT 4620N
DCT 4730N DCT 4740N DCT 4650N DCT 4460N DCT WHALE DCT ACK J68 PVD
DCT PARCH DCT KJFK/22R

PLND FL: 340 4620N/360 4460N/380

OFFP:7/0/1 WX PROG 12/18/24/06 CTOT: PARKING BAY:

	FUEL	TIME	CORR	ARR	0214
TRIP KJFK	60901	0757	DEP	1714
CONT 10.0 P/C	3945	0033	ET	0900
ALTN KBOS	5029	0034	GND DIST		3359	
FRSV	4725	0045	AIR DIST		3606	
FMC-RSV	-9.8-			CRZ DEG		P2.1	
ETOPS ADDNL	0	0000		CID			
ADDNL		CRZ		M.80	
T/O FUEL	74600		CRZ FL/TEMP	FL340/M48		
TAXI	1000	0010	TOC TROP		40189	
RAMP FUEL	75.6	0951				

ADJUST				
ADJ RAMP FUEL	AV TRK	269	CREW	...
FUEL REMN	AV W/C	M031	PAX
FUEL USED	AV ISA	P07	TOT

ZFW CHG PS 1000 BURN PS 314 / MS 1000 BURN MS 229
FL BELOW -1- BURN PS 555 / TIME 0752

NO TANKERING RECOMMENDED (P) EXTRA FUEL REASON: ATC WX MEL ALTN OTH

LEBL ATIS:

DOW RANGE 128.5 136.5 DOI RANGE

EZFW 165400	MZFW 184000	AZFW	
ETOW 240000	MTOW 240000	ATOW	RTOW
ELWT 179099	MLWT 198000	ALWT	RLWT

RWY ASSMD MFRH FLAP CG-F/A V1 VR V2 VREF EOP

.....
.....
.....

CAT 0012 LEBL/KJFK 05.SEP.2014/0645Z



DEST ALTN DIST TRK FL COMP TIME FUEL ROUTING
KBOS/27 0162 049 230 P009 0034 5029 DCT

DISPATCH BRIEFING INFO DISP: WATERS
- CONT FUEL FOR ANY DELAYS

TEL: +971 4 5550199

CREW NOTES:



WPT AWY	TRM ITT	DIST	WIND SR/TDEV	FL MORA	TAS W/C	SP/M TROP	STM ATM	ETA RTA	ATA	REMF MINR
LEBL/07L										70.7
DCT LOBAR	290 289	084	29/038 /P06	CLB 80		800 M038	014 40 0014 65.2
UN725 DIRMU	288 287	007	29/038 /P05	CLB 59		800 M038	001 40 0015 64.9
UN725 TOC	287 287	008	29/038 00/P05	CLB 59		800 M038	001 40 0016 64.5
UN725 VAKIN	287 287	016	29/038 00/P05	340 55	468 M038	800 40	003 0019 64.2
UN725 ZARKO	288 287	021	28/037 01/P05		468 132		003 M037 40 0022 63.8
UN725 LARDA	287 286	026	28/037 01/P05		468 132		003 M037 40 0025 63.4
UN725 VASUM	287 286	030	28/038 00/P05		468 98		004 M038 40 0029 62.8
UN725 DGO	288 286	040	28/038 01/P05		468 98		006 M038 41 0035 62.0
UN725 RATAS	280 278	051	27/035 01/P05		468 106		007 M035 40 0042 61.1
UN725 NUBLO	279 277	043	26/036 01/P05		468 106		006 M035 40 0048 60.3
UN725 SUSOS	279 277	020	26/036 01/P05		468 106		003 M035 40 0051 59.9
DCT STG	279 276	132	24/041 01/P05		468 95		018 M033 40 0109 57.5
DCT KOPAS	294 289	209	23/042 02/P04		467 58		028 M021 39 0137 53.8
DCT 4620N	302 294	320	22/013 02/P02		465 20		042 M003 36 0219 48.5
DCT 4730N	294 281	417	00/036 01/P08	360 20	467 M008	800 44	054 0313 41.7
DCT 4740N	289 273	409	23/058 02/P08		467 20		059 M047 45 0412 34.5



WPT AWY	TRM ITT	DIST	WIND SR/TDEV	FL MORA	TAS W/C	SP/M TROP	STM ATM	ETA RTA	ATA	REMF MINR
DCT 4650N	283 265	417	28/057 01/P10		469 20 M056		100 51 0512 27.2
DCT 4460N	275 257	441	30/070 01/P10		469 20 M054		104 47 0616 19.8
DCT WHALE	269 252	325	30/028 00/P06	380 20	465 M020	800 49	044 0700 15.0
DCT ACK	263 248	146	31/016 00/P07		466 20 M008		019 50 0719 12.9
J68 PVD	308 293	068	29/027 00/P06		465 27 M027		009 49 0728 12.0
DCT TOD	234 219	008	28/028 00/P06		465 27 M014		001 49 0729 11.8
DCT PARCH	233 219	041	30/013 /P14	DES 42		290 M002 50	006 0735 11.5
DCT KJFK/22R	263 250	080	26/008 /	DES 42		250 M008 52	022 0757 9.8

EK COMP FREQ:
SPEC RQMTS:

PARKING BAY:

KJFK ATIS:

ATC CLRNC:



CLIMB	TOC	VAKIN	ZARKO
100 287/020 +06	N4149.5	N4154.3	N4200.3
150 286/023 -04	W00000.7	W00021.2	W00047.6
200 292/027 -14	360 288/039 -52	360 288/039 -52	360 284/038 -52
310 285/038 -41	340 286/038 -48	340 286/038 -48	340 284/037 -48
350 287/039 -50	320 285/038 -43	320 285/038 -43	320 284/035 -43
	300 284/037 -38	300 284/037 -38	300 284/034 -38

LARDA	VASUM	DGO	RATAS
N4207.9	N4216.3	N4227.2	N4234.5
W00121.7	W00200.7	W00252.8	W00401.8
360 284/038 -52	360 281/038 -52	360 279/039 -52	360 269/037 -52
340 284/037 -48	340 281/038 -48	340 277/038 -48	340 268/035 -48
320 284/035 -43	320 281/036 -43	320 276/037 -43	320 267/034 -43
300 284/034 -38	300 281/034 -38	300 274/035 -38	300 266/033 -38

NUBLO	SUSOS	STG	KOPAS
N4240.0	N4242.4	N4255.6	N4400.0
W00459.3	W00526.6	W00825.5	W01300.0
360 262/039 -52	360 262/039 -52	360 239/043 -52	360 226/038 -51
340 260/036 -48	340 260/036 -48	340 237/041 -48	340 227/042 -49
320 258/035 -43	320 258/035 -43	320 236/038 -43	320 224/038 -44
300 257/033 -38	300 257/033 -38	300 234/035 -38	300 221/034 -39

4620N	4730N	4740N	4650N
N4600.0	N4700.0	N4700.0	N4600.0
W02000.0	W03000.0	W04000.0	W05000.0
360 228/009 -51	380 358/036 -54	380 232/056 -53	380 279/059 -49
340 216/013 -51	360 000/036 -49	360 234/058 -49	360 277/057 -47
320 224/008 -46	340 002/035 -45	340 236/060 -45	340 274/055 -46
300 248/004 -41	320 007/034 -41	320 238/052 -41	320 273/053 -44

4460N	WHALE	ACK	PVD
N4400.0	N4211.9	N4116.9	N4143.5
W06000.0	W06700.0	W07001.6	W07125.8
380 296/070 -50	400 297/030 -55	400 306/016 -55	400 285/027 -55
360 300/070 -47	380 297/028 -51	380 309/016 -50	380 286/027 -51
340 304/071 -43	360 293/024 -46	360 306/016 -46	360 287/026 -47
320 294/067 -39	340 288/020 -42	340 302/016 -42	340 288/026 -43

TOD	DESCENT
N4137.3	350 296/015 -45
W07132.5	310 314/015 -35
400 280/028 -55	200 279/017 -11
380 280/028 -51	150 290/019 -01
360 282/027 -47	100 308/013 +08
340 284/025 -43	



AIR TRAFFIC CONTROL

FF LECBZQZX LECMZQZX LPPOZQZX EGGXZQZX CZQXZQZX CZQMZQZX KZBWZQZX
KZNYZQZX
050645 OMDBUAEF
(FPL-CAT012-IS
-B752/M-SDE3FHIM3RWZ/LB1
-LEBL1714
-N0468F340 DCT LOBAR UN725 SUSOS DCT STG DCT KOPAS/M080F340 DCT
4620N/M080F360 DCT 4730N DCT 4740N DCT 4650N/N0469F360 DCT
4460N/N0465F380 DCT WHALE DCT ACK J68 PVD DCT PARCH DCT
-KJFK0757 KBOS
-PBN/A1B3B4B5C4D4O4 NAV/RNVD1E2A1 DOF/140911 REG/N537SB EET/LECM0019
LPPO0137 EGGX0158 CZQX0314 CZQM0553 KZBW0700 KZNY0750 RMK/ADSB TCAS
7.0 NRP HAR)



CREW ALERT

D I S P A T C H B R I E F I N G I N F O CAT012 LEBL/KJFK

CREW ALERT

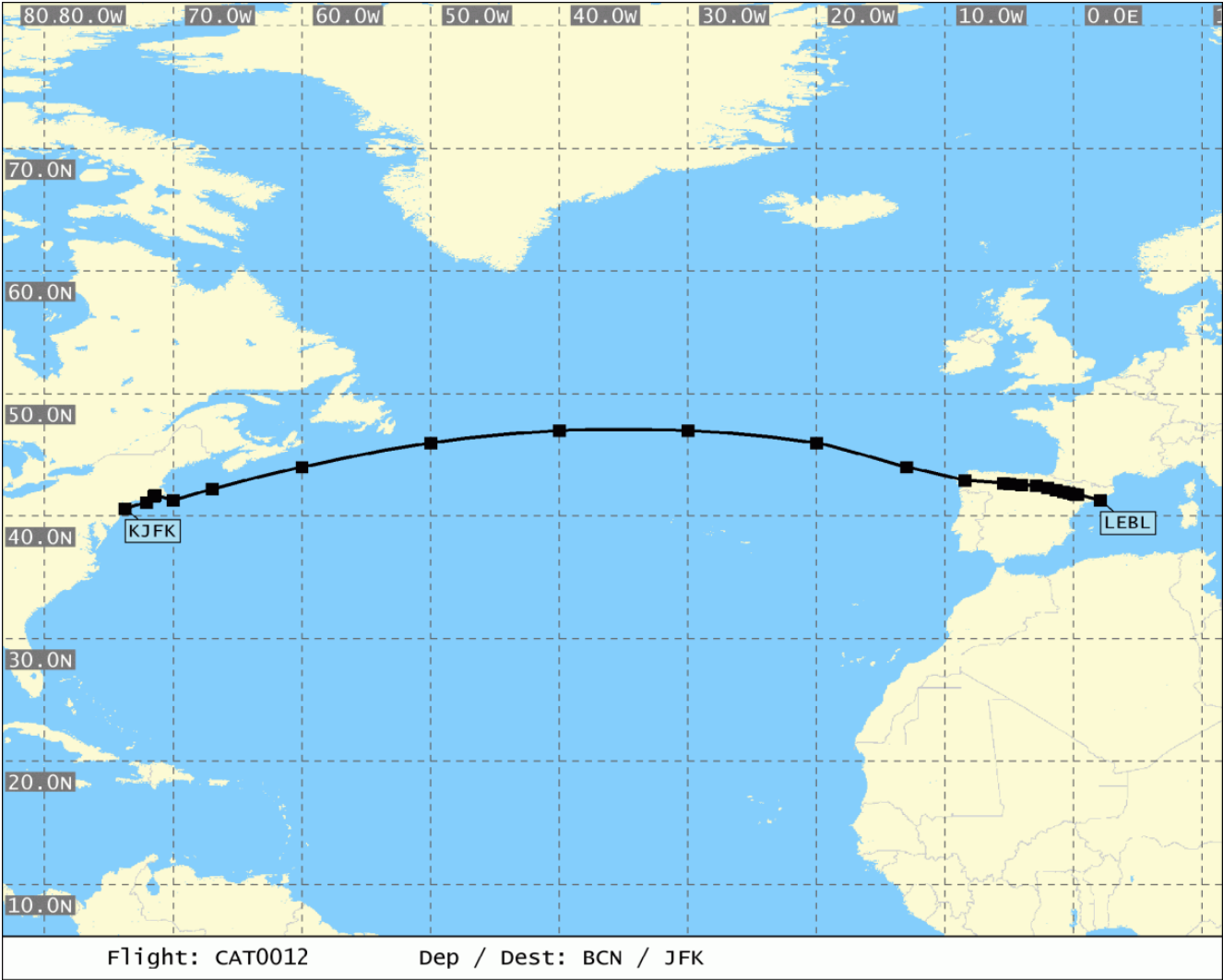
SB005/13 COMPANY NOTAM - DETAILED MAPS OUTAGES
IN RARE CASES, DETAILED MAP GENERATION HAS BEEN FAILING DUE TO AN
"INSUFFICIENT MEMORY" ERROR. THIS OCCURS WHEN THE WEB HOST REDUCES
THE MAXIMUM ALLOWABLE SCRIPT MEMORY FOR ONE REASON OR ANOTHER. WHILE
THESE OUTAGES ARE NORMALLY SHORT LIVED, I WILL CONTINUE TO MONITOR
THE LOGS TO MAKE SURE THEY DON'T BECOME TOO COMMON.
- FTPB 05DEC13

SB004/13 COMPANY NOTAM - WIND FETCH ERRORS
WHILE WIND FETCH ERRORS ARE RARE, PILOTS SHOULD STILL BE AWARE OF
THEIR NEGATIVE EFFECT ON FLIGHT PLAN ACCURACY. "WARNING: WIND FETCH
FAILED, ASSUMED ISA CONDITIONS" WILL BE DISPLAYED ON ANY FLIGHT PLAN
WHICH FAILS TO DOWNLOAD THE WINDS ALOFT. THE RESULTING FLIGHT PLAN
WILL BE LESS ACCURATE AS THE SYSTEM WILL REVERT TO A STANDARD
ATMOSPHERE MODEL. IT IS RECOMMENDED TO RE-GENERATE THE FLIGHT PLAN
WHEN SUCH AN ERROR OCCURS TO OBTAIN A MORE ACCURATE OFP.
- FTPB 05OCT13

SB003/13 COMPANY NOTAM - FLIGHT RELEASE UNITS
ALL FLIGHT CREW: PLEASE PAY SPECIAL ATTENTION TO THE UNITS SELECTION
WHEN GENERATING A FLIGHT PLAN. FAILURE TO IDENTIFY THE CORRECT UNITS
WHEN REFUELING PRIOR TO FLIGHT CAN RESULT IN DEPARTING WITH
INSUFFICIENT FUEL AND/OR AN ERRONEOUS PAYLOAD.
- FTPB 13JUL13

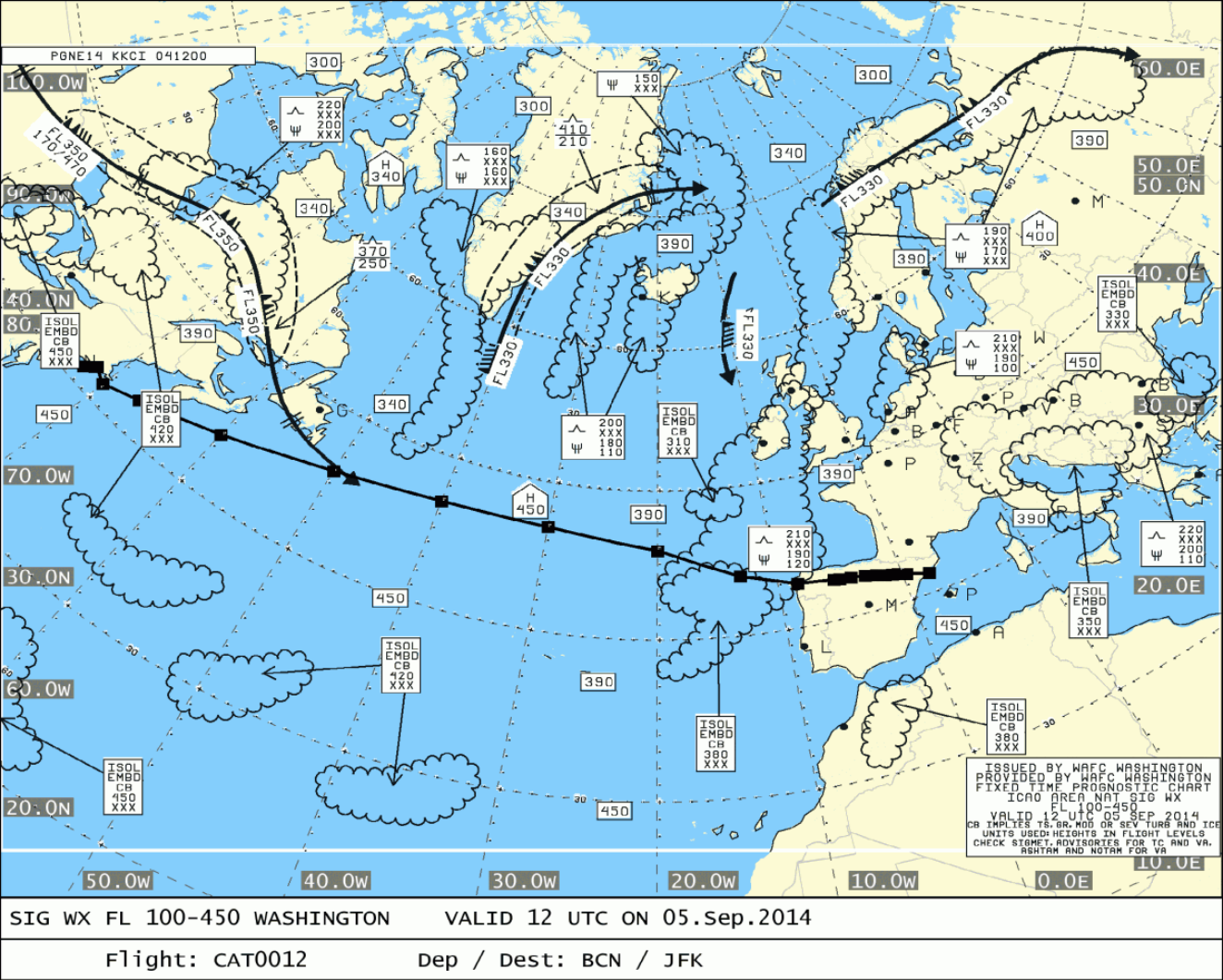


Route



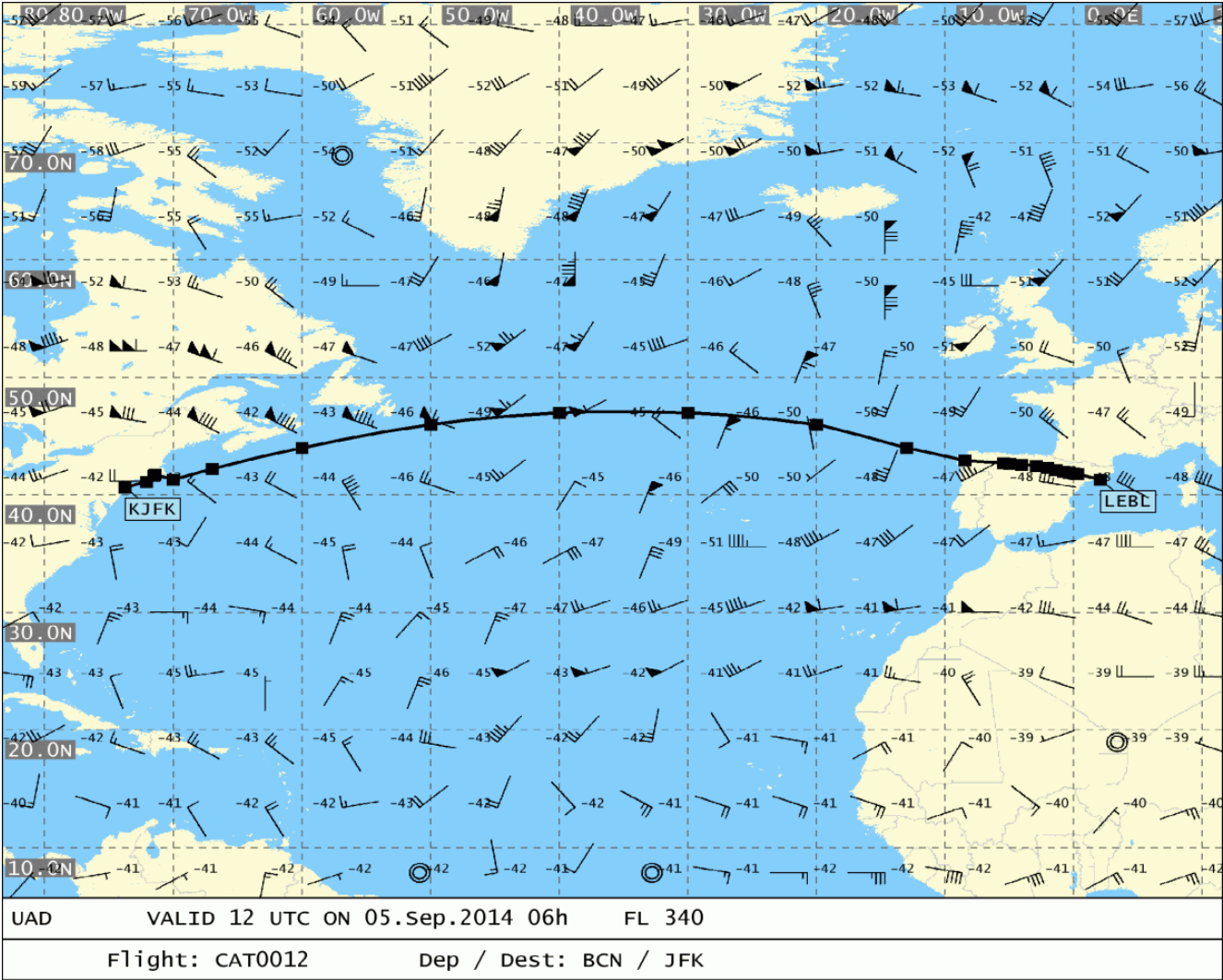


SigWx 1 of 1



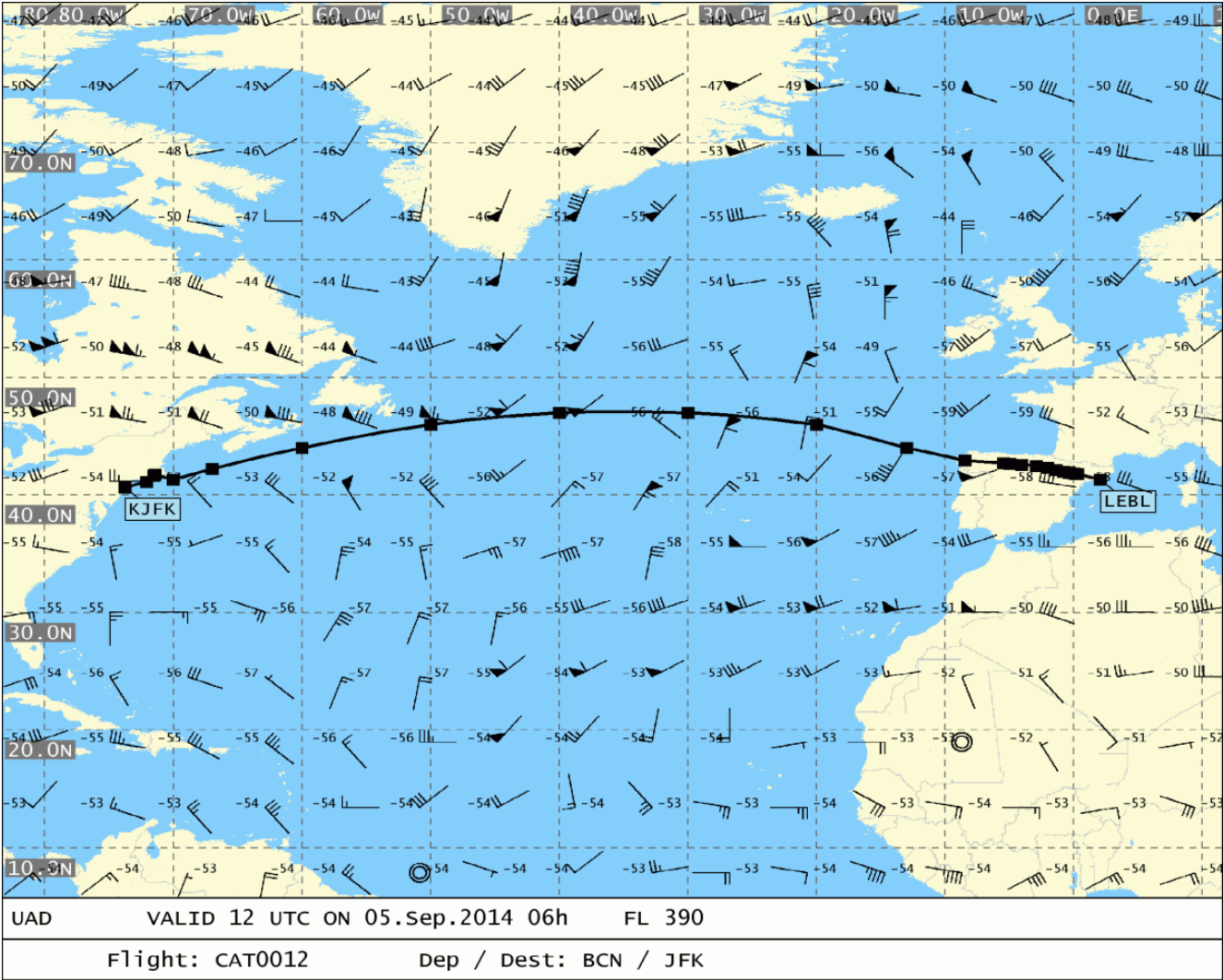


UAD 1 of 2





UAD 2 of 2





SELECTED NOTAM

LIDO-NOTAM-BULLETIN INCLUDES NOTAM, INTAM AND CHART NOTAM
VALID: 1409111714 - 1409120446 ETD+TRIP+ALTN+3HRS
CAT 012 /11SEP OFP-NR: 07/00/1
ROUTE: LEBL - KJFK ALTN: KBOS
N0468F340 DCT LOBAR UN725 SUSOS DCT STG DCT KOPAS/M080F340 DCT
4620N/M080F360 DCT 4730N DCT 4740N DCT 4650N/N0469F360 DCT
4460N/N0465F380 DCT WHALE DCT ACK J68 PVD DCT PARCH DCT

GABI/WEATHER SERVICE DATE: 05Sep2014 TIME: 06:45 UTC

=====

DEPARTURE AIRPORT - DETAILED INFO

=====

LEBL/BCN EL PRAT

NIL MINIMA

SA 050630 05004KT 9999 FEW028 23/21 Q1014 NOSIG

FC NIL

FT 050602 0506/0606 14005KT 9999 SCT018 TX27/0512Z TN23/0506Z
BECMG 0508/0511 11009KT
PROB40
TEMPO 0512/0521 FEW025CB
TEMPO 0516/0520 06010KT
BECMG 0519/0521 VRB04KT

=====

DESTINATION AIRPORT - DETAILED INFO

=====

KJFK/JFK KENNEDY INTL

NIL MINIMA

SA 050633 24007KT 10SM FEW009 SCT250 22/20 A3016 RMK AO2

FC NIL

FT 050528 0506/0612 21006KT P6SM FEW080
FM050700 VRB04KT P6SM SKC
FM051300 18008KT P6SM FEW250
FM051800 17015KT P6SM SCT040
FM060100 20008KT P6SM FEW010 SCT040
FM060800 22006KT P6SM SCT010 BKN035

=====

DESTINATION ALTERNATE AIRPORT(S)

CAT 0012 LEBL/KJFK 05.SEP.2014/0645Z



=====

KBOS/BOS LOGAN INTL

NIL MINIMA

SA 050554 24009KT 10SM CLR 23/16 A3013 RMK AO2 SLP203 T02280156
10267 20222 53001

FC NIL

FT 050540 0506/0612 23008KT P6SM FEW250
FM051800 21012KT P6SM FEW250
FM060500 22010KT P6SM FEW010
FM060900 22007KT 6SM BR SCT010

===== END OF GABI-NOTAM-BULLETIN =====

CAT 0012 LEBL/KJFK 05.SEP.2014/0645Z



SIGMETs

NIL SIGMETs



OCEANIC TRACK(S) INFORMATION

NAT WESTBND TRACKS FL 10000000/0 INCLUSIVE 05SEP0100-05SEP0800Z

NOTES:

CAT 0012 LEBL/KJFK 05.SEP.2014/0645Z



DISPATCH BRIEFING

DISPATCH BRIEFING : CAT012 REG:N537SB LEBL-KJFK

DATE : 05-09-2014

GENERATED BY USER : Heathrow GHA

User remarks : PLEASE NOTE AIRCRAFT DEFERRED DEFECT INTERFACE NOT ACTIVE.
FOR MEL INFO REFER TO DISPATCH REMARKS IN MAIN OFP.

CAT 0012 LEBL/KJFK 05.SEP.2014/0645Z



VOLCANO ASH ADVISORY

NO ASH MESSAGES FOUND.

- - - - - END OF BRIEFING PACKAGE - - - - -