



FLIGHT DISPATCH RELEASE ACKNOWLEDGEMENT

* FLT 0012/11SEP SHIP 537 BCN-JFK FLAG RLS 1 *

LLUIS-DEL CERRO 810821 CAT 0012/11SEP ETE- 757 RLS 1
BCN/LEBL/EL PRAT - JFK/KJFK/KENNEDY INTL
SCHEDULED BCN/LEBL 1714Z-1914L - JFK/KJFK 0214Z-2214L
PLANNED 1714Z-1914L 0127Z-2127L
DEST ALTN BOS/KBOS/LOGAN INTL

SHIP 537 IFR ICAO FLIGHT PLAN BLK FUEL 75600
 MIN FUEL FOR T/O 74600

I CONSIDER ALL FACTORS INCLUDING MY OWN PHYSICAL
CONDITION SATISFACTORY FOR THIS FLIGHT. I HAVE
RECEIVED THE FOLLOWING:

FLIGHT PLAN/DISPATCH RELEASE
FLIGHT PLAN ADDENDUM
UPDATED WEATHER BRIEFING
PAPER FUEL SERVICE RECORD (IF REQD)

CAPTAINS SIGNATURE**-----

PRINTED NAME/CREW BASE**-----



* FLT 0012/11SEP SHIP 537 BCN-JFK FLAG RLS 1 *

ACARS USE 0012/11 LOCAL DEP DATE IS 11SEP

FLIGHT DISPATCH RELEASE ACKNOWLEDGEMENT - CAPTAIN COPY

I CONSIDER ALL FACTORS INCLUDING MY OWN PHYSICAL
CONDITION SATISFACTORY FOR THIS FLIGHT.

LLUIS-DEL CERRO 810821 CAT 0012/11SEP ETE- 757 RLS 1
BCN/LEBL/EL PRAT - JFK/KJFK/KENNEDY INTL
SCHEDULED BCN/LEBL 1714Z-1914L - JFK/KJFK 0214Z-2214L
PLANNED 1714Z-1914L 0127Z-2127L
DEST ALTN BOS/KBOS/LOGAN INTL

SHIP 537 B752/M-SDE3FHIM3RWZ/LB1 IFR ICAO FLIGHT PLAN
REG/N537SB NAV/RNVD1E2A1 RNAV1 RNAV5 RNP10
RMK/TCAS AGCS EQUIPPED NRP USA
ELEVATION BCN/LEBL 14 FT JFK/KJFK 14 FT

LEBL DCT LOBAR UN725 SUSOS DCT STG DCT KOPAS/M080F340 DCT
4620N/M080F360 DCT 4730N DCT 4740N DCT 4650N/N0469F360 DCT
4460N/N0465F380 DCT WHALE DCT ACK J68 PVD DCT PARCH DCT KJFK

FF FACTOR PLUS 0.0
RAMP WT 241000
BLOCK FUEL 75600
FMS RESERVE FUEL 9754
INITIAL COST INDEX M.80
FL 340 T-O-C WINDS 29038 ISA M48

PASSENGERS 180 CARGO 0
ETE- 757 NM 3359 TAS 468
SCHEDULED GATE N/A RAMP FREQ N/A

TAKEOFF GROSS WT 240000
LANDING WT 179099
ZERO FUEL WT 165400

FIX LIST LEBL LOBAR DIRMU VAKIN ZARKO LARDA VASUM DGO RATAS
 NUBLO SUSOS STG KOPAS 4620N 4730N 4740N 4650N 4460N
 WHALE ACK PVD PARCH KJFK



COMPUTED ENROUTE WINDS

FIX	CRZ FL	TWO FLT LVLS LOWER				TWO FLT LVLS HIGHR			
	TROP SAT TAT	SAT TAT	SAT TAT	SAT TAT	SAT TAT	SAT TAT	SAT TAT	SAT TAT	
VAKIN	34 29038	30 28037	32 29038	36 29039	38 29039				
	40 -48 -19	-38 -9	-43 -14	-52 -23	-56 -27				
ZARKO	34 28037	30 28034	32 28035	36 28038	38 28039				
	40 -48 -19	-38 -9	-43 -14	-52 -23	-56 -27				
LARDA	34 28037	30 28034	32 28035	36 28038	38 28039				
	40 -48 -19	-38 -9	-43 -14	-52 -23	-56 -27				
VASUM	34 28038	30 28034	32 28036	36 28038	38 28039				
	40 -48 -19	-38 -9	-43 -14	-52 -23	-56 -27				
DGO	34 28038	30 27035	32 28037	36 28039	38 28040				
	41 -48 -19	-38 -9	-43 -14	-52 -23	-56 -27				
RATAS	34 27035	30 27033	32 27034	36 27037	38 27040				
	40 -48 -19	-38 -9	-43 -14	-52 -23	-56 -27				
NUBLO	34 26036	30 26033	32 26035	36 26039	38 26041				
	40 -48 -19	-38 -9	-43 -14	-52 -23	-56 -27				
SUSOS	34 26036	30 26033	32 26035	36 26039	38 26041				
	40 -48 -19	-38 -9	-43 -14	-52 -23	-56 -27				
STG	34 24041	30 23035	32 24038	36 24043	38 24045				
	40 -48 -19	-38 -9	-43 -14	-52 -23	-55 -26				
KOPAS	34 23042	30 22034	32 22038	36 23038	38 23035				
	39 -49 -20	-39 -10	-44 -15	-51 -22	-54 -25				
4620N	34 22013	30 25004	32 22008	36 23009	38 26006				
	36 -51 -22	-41 -12	-46 -17	-51 -22	-51 -22				
4730N	36 00036	32 01034	34 00035	38 36036	40 36034				
	44 -49 -20	-41 -12	-45 -16	-54 -25	-57 -28				
4740N	36 23058	32 24052	34 24060	38 23056	40 23052				
	45 -49 -20	-41 -12	-45 -16	-53 -24	-56 -27				
4650N	36 28057	32 27053	34 27055	38 28059	40 28059				
	51 -47 -18	-44 -15	-46 -17	-49 -20	-50 -21				
4460N	36 30070	32 29067	34 30071	38 30070	40 30068				
	47 -47 -18	-39 -10	-43 -14	-50 -21	-54 -25				
WHALE	38 30028	34 29020	36 29024	40 30030	42 29029				
	49 -51 -22	-42 -13	-46 -17	-55 -26	-59 -30				
ACK	38 31016	34 30016	36 31016	40 31016	42 29015				
	50 -50 -21	-42 -13	-46 -17	-55 -26	-59 -30				
PVD	38 29027	34 29026	36 29026	40 29027	42 29027				
	49 -51 -22	-43 -14	-47 -18	-55 -26	-59 -30				

DESCENT FORECAST WINDS

35000	30000	25000	20000	15000	10000	05000
26022	24017	24010	26017	28018	29011	27011



MEL ITEMS FOR SHIP NUMBER 537

NONE

FLIGHT PLAN FUEL		REQUIRED	DISCRETIONARY
		TIME/BURN	TIME/BURN
TAXI			10/ 1000
TRIP BCN/LEBL-JFK/KJFK		757/ 60901	
ALTN BOS/KBOS FL230		34/ 5029	
RESERVE FUEL		45/ 4725	
CONTINGENCY FUEL		33/ 3945	

MIN FUEL FOR T/O		* 74600 *	
		*****	*****
BLOCK FUEL		* 75600 *	

ENROUTE FUEL PLAN			
*** PLANNED LNDG FUEL AT DEST *** 13699 ***			
*** MINIMUM LNDG FUEL AT DEST *** 9754 ***			
*** AVAIL DELAY FUEL *** 3945			
WHICH IS 33 MINS AT FL150/CLEAN			

TAXI IN 6/ 500



** DISPATCHER REMARKS **
01 CONT FUEL FOR ANY DELAYS

*****FLIGHT OPERATIONS AND MAINTENANCE REMARKS*****
SB005/13: IN RARE CASES, DETAILED MAP GENERATION HAS BEEN
FAILING DUE TO AN "INSUFFICIENT MEMORY" ERROR. THIS OCCURS
WHEN THE WEB HOST REDUCES THE MAXIMUM ALLOWABLE SCRIPT MEMORY
FOR ONE REASON OR ANOTHER. WHILE THESE OUTAGES ARE NORMALLY
SHORT LIVED, I WILL CONTINUE TO MONITOR THE LOGS TO MAKE SURE
THEY DON'T BECOME TOO COMMON.

SB004/13: WHILE WIND FETCH ERRORS ARE RARE, PILOTS SHOULD
STILL BE AWARE OF THEIR NEGATIVE EFFECT ON FLIGHT PLAN
ACCURACY. "WARNING: WIND FETCH FAILED, ASSUMED ISA CONDITIONS"
WILL BE DISPLAYED ON ANY FLIGHT PLAN WHICH FAILS TO DOWNLOAD
THE WINDS ALOFT. THE RESULTING FLIGHT PLAN WILL BE LESS
ACCURATE AS THE SYSTEM WILL REVERT TO A STANDARD ATMOSPHERE
MODEL. IT IS RECOMMENDED TO RE-GENERATE THE FLIGHT PLAN WHEN
SUCH AN ERROR OCCURS TO OBTAIN A MORE ACCURATE OFP.

SB003/13: ALL FLIGHT CREW: PLEASE PAY SPECIAL ATTENTION TO THE
UNITS SELECTION WHEN GENERATING A FLIGHT PLAN. FAILURE TO
IDENTIFY THE CORRECT UNITS WHEN REFUELING PRIOR TO FLIGHT CAN
RESULT IN DEPARTING WITH INSUFFICIENT FUEL AND/OR AN ERRONEOUS
PAYLOAD.



 SCHEDULED BCN/LEBL 1714Z-1914L - JFK/KJFK 0214Z-2214L
 PLANNED 1714Z-1914L 0127Z-2127L

PLND OUT	PLND OFF	TAKEOFF	ETE	ETA	PLND ON	PLND IN
1714Z	1724Z	Z	0757	Z	0121Z	0127Z
1914L	1924L	TZDIF MINUS	6.0HRS	L	2121L	2127L

RTE FMS	LAT LONG	MAG TRUE	IAS/M FL	GS ZD	ZT ETA	TRMG ATA	ZF PRMG
------------	-------------	-------------	-------------	----------	-----------	-------------	------------

TAXI	N 4117.8					757	
LEBL	E00204.7		CLB				74.6

DCT	N 4144.9	M290		433	014	743	5.4
LOBAR	E00019.1	T289	CLB	84			69.2

UN725	N 4147.1	M288		430	001	742	0.3
DIRMU	E00009.6	T287	CLB	7			68.8

UN725	N 4149.5	M287	278/800	430	001	740	0.4
* T-O-C *	W00000.7	T287	340	8			68.5

** COST INDEX 8 **

UN725	N 4154.3	M287	278/800	430	003	738	0.3
VAKIN	W00021.2	T287	340	16			68.2

** FIR LECM ** N4154.3 W00021.1 **

UN725	N 4200.3	M288	278/800	431	003	735	0.4
ZARKO	W00047.6	T287	340	21			67.8

UN725	N 4207.9	M287	278/800	431	003	732	0.5
LARDA	W00121.7	T286	340	26			67.3

UN725	N 4216.3	M287	278/800	430	004	728	0.6
VASUM	W00200.7	T286	340	30			66.7

UN725	N 4227.2	M288	278/800	430	006	722	0.7
DGO	W00252.8	T286	340	40			66.0

UN725	N 4234.5	M280	278/800	433	007	715	0.9
RATAS	W00401.8	T278	340	51			65.0

UN725	N 4240.0	M279	278/800	433	006	709	0.8
NUBLO	W00459.3	T277	340	43			64.3

UN725	N 4242.4	M279	278/800	433	003	706	0.4
SUSOS	W00526.6	T277	340	20			63.9

DCT	N 4255.6	M279	278/800	435	018	648	2.4
STG	W00825.5	T276	340	132			61.5

** DAL POSN RPT **



DCT	N 4400.0	M294	278/800	446	028	620	3.7
KOPAS	W01300.0	T289	340	209			57.8

** FIR LPPO ** N4359.8 W01300.0 **

** FIR EGGX ** N4500.0 W01630.5 **

DCT	N 4600.0	M302	278/800	462	042	538	5.4
4620N	W02000.0	T294	340	320			52.4

** DAL POSN RPT **

** CLIMB TO 360 **

DCT	N 4700.0	M294	266/800	459	054	444	6.8
4730N	W03000.0	T281	360	417			45.6

** FIR CZQX ** N4659.8 W03000.0 **

DCT	N 4700.0	M289	266/800	420	059	345	7.1
4740N	W04000.0	T273	360	409			38.5

** DAL POSN RPT **

DCT	N 4600.0	M283	266/800	413	100	245	7.3
4650N	W05000.0	T265	360	417			31.2

** FIR CZQM ** N4445.8 W05610.0 **

DCT	N 4400.0	M275	266/800	415	104	141	7.4
4460N	W06000.0	T257	360	441			23.7

** DAL POSN RPT **

** CLIMB TO 380 **

DCT	N 4211.9	M269	254/800	445	044	057	4.8
WHALE	W06700.0	T252	380	325			19.0

** FIR KZBW ** N4211.8 W06700.0 **

DCT	N 4116.9	M263	254/800	458	019	038	2.1
ACK	W07001.6	T248	380	146			16.9

** DAL POSN RPT **

J68	N 4143.5	M308	254/800	438	009	029	1.0
PVD	W07125.8	T293	380	68			15.9

DCT	N 4137.3	M234	254/800	451	001	028	0.1
* T-O-D *	W07132.5	T219	380	8			15.8

** COST INDEX 8 **

DCT	N 4106.0	M233		444	006	022	0.4
PARCH	W07207.2	T219	DES	41			15.4



** FIR KZNY ** N4046.1 W07319.0 **

DCT	N 4038.4	M263		255	022	000	1.7
KJFK	W07346.7	T250	DES	80			13.7

CITY PAIR REMARKS

BCN-JFK 00

NONE

FIX PAIRS

00 NONE



NOTAMS AND REMARKS

BCN -AIRPORT REMARKS

LEBL 050600Z 05002KT 9999 FEW028 23/21 Q1014 NOSIG
LEBL 050602Z 0506/0606 14005KT 9999 SCT018 TX27/0512Z TN23/0506Z
BECMG 0508/0511 11009KT
PROB40
TEMPO 0512/0521 FEW025CB
TEMPO 0516/0520 06010KT
BECMG 0519/0521 VRB04KT

END

JFK -AIRPORT REMARKS

KJFK 050551Z 22006KT 10SM FEW250 22/20 A3016 RMK AO2 SLP212
T02220200 10250 20222 56002
KJFK 050528Z 0506/0612 21006KT P6SM FEW080
FM050700 VRB04KT P6SM SKC
FM051300 18008KT P6SM FEW250
FM051800 17015KT P6SM SCT040
FM060100 20008KT P6SM FEW010 SCT040
FM060800 22006KT P6SM SCT010 BKN035

END

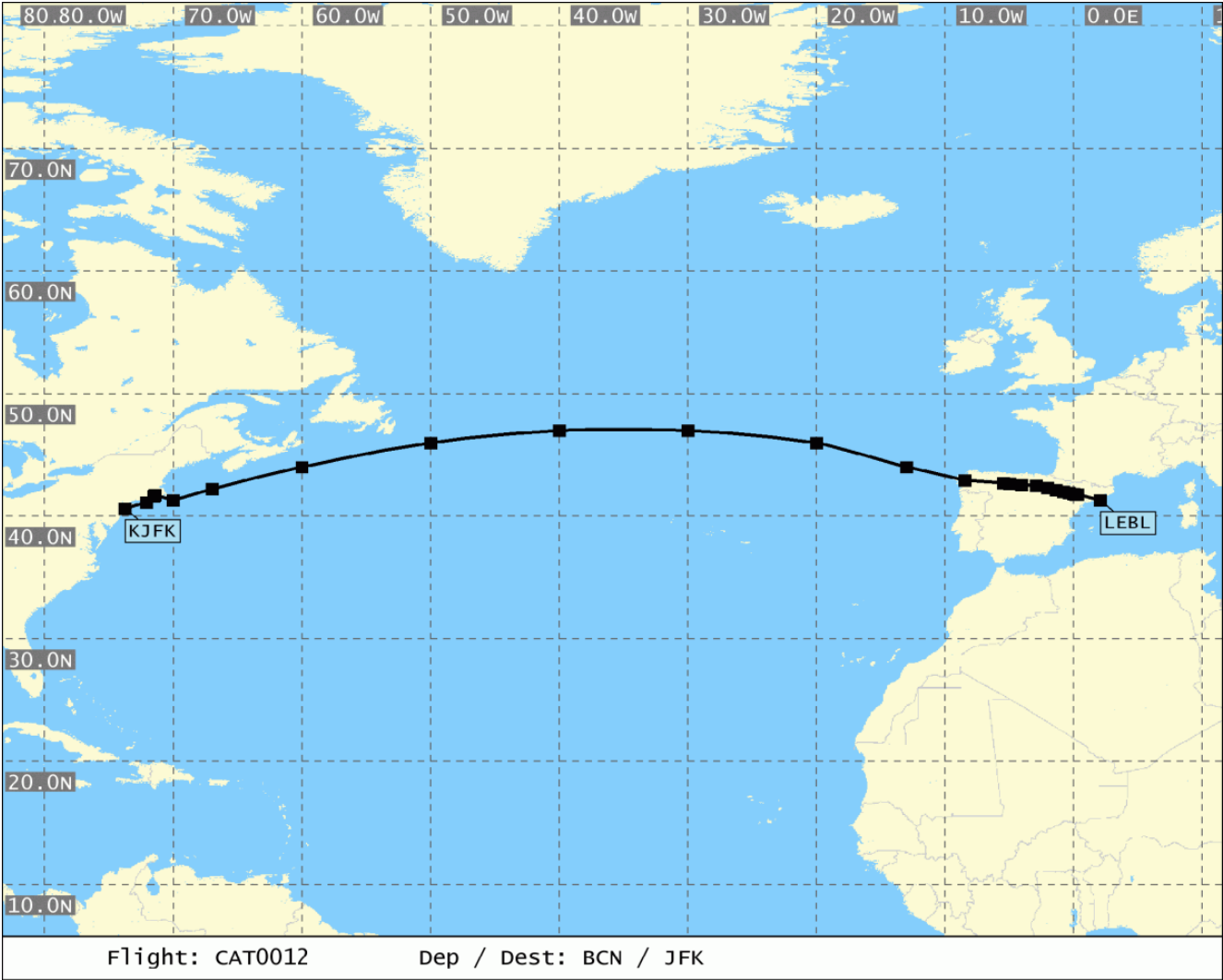
BOS -AIRPORT REMARKS

KBOS 050554Z 24009KT 10SM CLR 23/16 A3013 RMK AO2 SLP203 T02280156
10267 20222 53001
KBOS 050540Z 0506/0612 23008KT P6SM FEW250
FM051800 21012KT P6SM FEW250
FM060500 22010KT P6SM FEW010
FM060900 22007KT 6SM BR SCT010

END

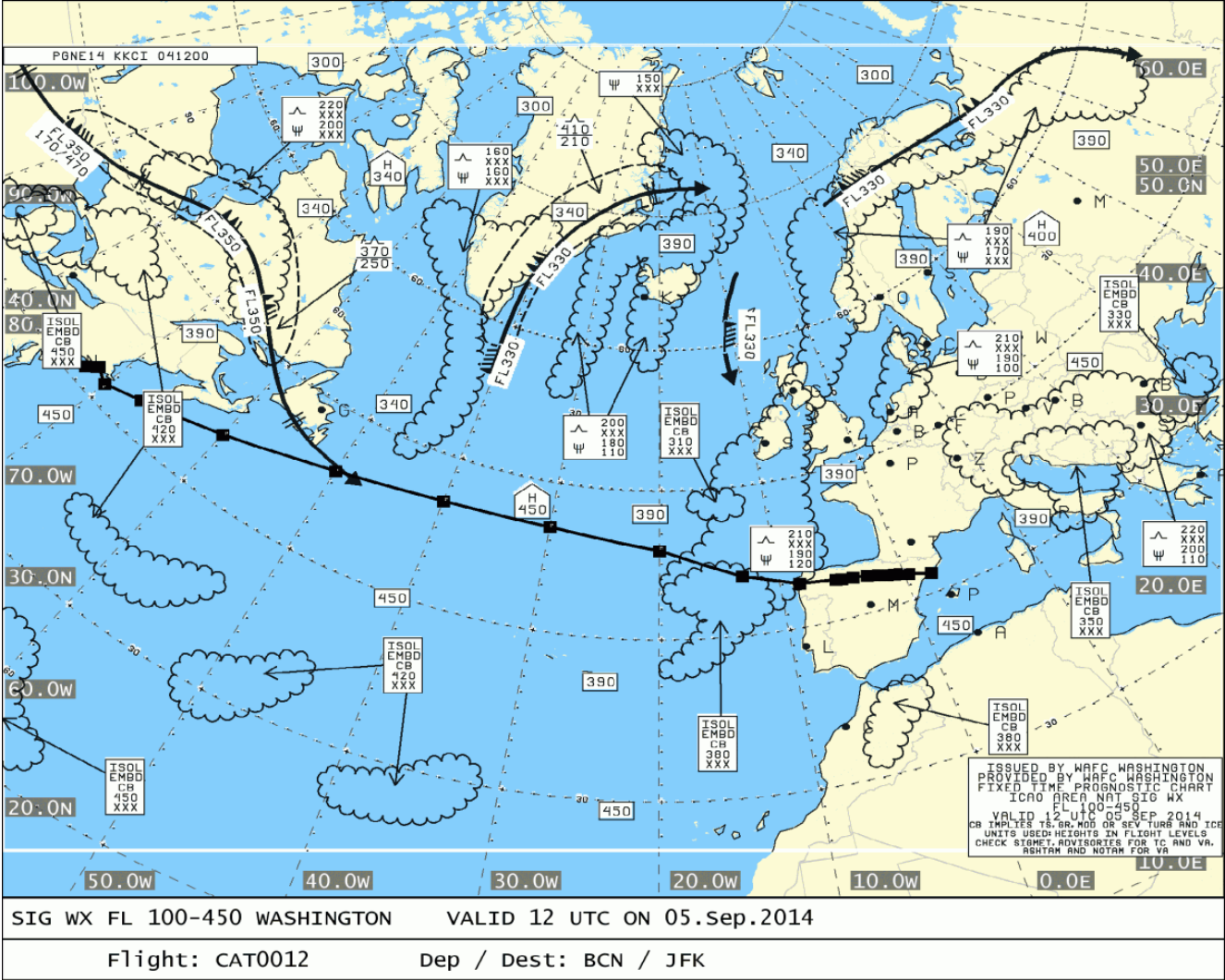


Route



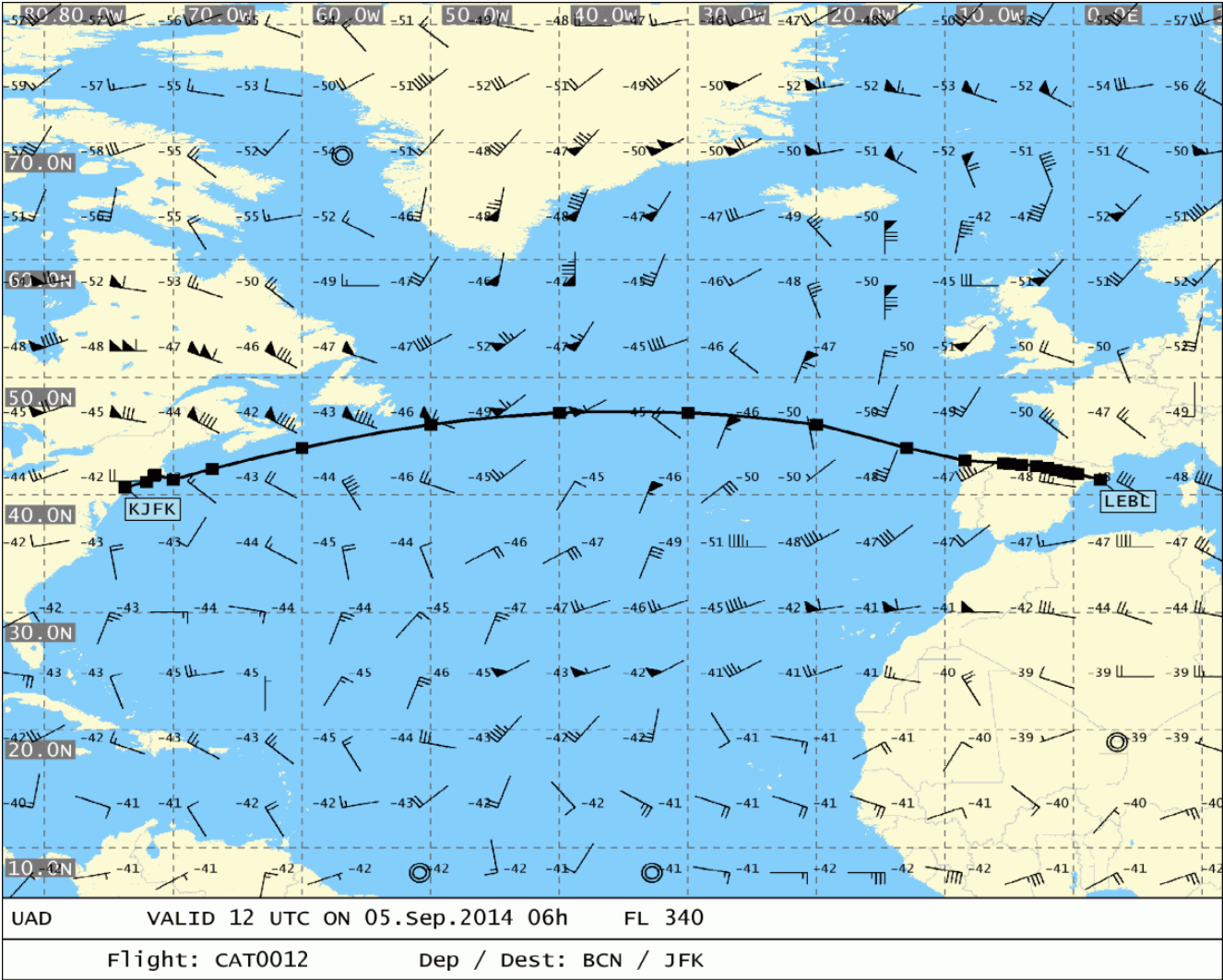


SigWx 1 of 1





UAD 1 of 2





UAD 2 of 2

