



\* \* \* \* \*  
0012/11SEP  
\* \* \* \* \*

\*\*\*\*\* DISPATCH RELEASE \*\*\*\*\*  
RLS      1    050646  
CAT0012/11

Y  
FLT 012/11                  DISPATCH RELEASE IFR  
TYP/EQP   FROM   TO    AT1   AT2   PAY-   BURN   MINIMUM   GATE  
   LOAD           FUEL       FUEL  
752 537   BCN   JFK    BOS           329    609    74600    75600  
FM: N/A                      TO: N/A                      M1   A0    F0    E3    D04

SUBJECT TO THE FOLLOWING CONDITIONS

CONT FUEL FOR ANY DELAYS

RC810821/

CAPT .....

HOU DISP: MARTHA WATERS

F/O .....

TEL\* 281-555-0199

CCO:

..... FILED AS UNITED CALL SIGN .....

CAT 0012      LEBL/KJFK      05.SEP.2014/0646Z

\*\*\*\*\* AIRCRAFT PLACARDS \*\*\*\*\*

PLC 1 050646  
CAT 012/11

```

A/C 0537 CAT      GRH  OEW 00132500 IDX -0003      SEL-CAL
FANS ENABLED..IRIDIUM SATCOM..ECON PLUS SEATING 211
===== AIRCRAFT PLACARDS =====#
NONE
*****          DISPATCH RELEASE          *****
RLS      1    050646
CAT0012/11

```

Y										
FLT 012/11				DISPATCH RELEASE IFR						
TYP/EQP		FROM	TO	AT1	AT2	PAY- LOAD	BURN	MINIMUM FUEL	GATE FUEL	
752	537	BCN	JFK	BOS		329	609	74600	75600	
FM: N/A			TO: N/A				M1	A0	F0	E3 D04

SUBJECT TO THE FOLLOWING CONDITIONS

CONT FUEL FOR ANY DELAYS

RC810821/

CAPT ..... HOU DISP: MARTHA WATERS  
F/O ..... TEL\* 281-555-0199  
CCQ:

..... FILED AS UNITED CALL SIGN .....

CAT 0012      LEBL/KJFK      05.SEP.2014/0646Z



\*\*\*\*\*      AIRCRAFT PLACARDS      \*\*\*\*\*

PLC      1    050646  
CAT 012/11

A/C 0537 CAT      GRH    OEW 00132500 IDX -0003      SEL-CAL  
FANS ENABLED..IRIDIUM SATCOM..ECON PLUS SEATING 211  
===== AIRCRAFT PLACARDS =====#

NONE

\*\*\*\*\* SPECIAL CREW MESSAGES \*\*\*\*\*

INF      -NO MESSAGES

\*\*\*\*\*      ATC FLIGHT PLAN      \*\*\*\*\*

AFT      1    050646  
CAT 012/11

-TITLE ACK -MSGTYP IFPL -FILTIM 050646 -ORIGINDT 1409050646

-END ADDR

-EXTADDR -NUM 003

-IFPLID AA36979811

-MSGTXT (FPL-CAT012-IS

-B752/M-SDE3FHIM3RWZ/LB1

-LEBL1714

-N0468F340 DCT LOBAR UN725 SUSOS DCT STG DCT KOPAS/M080F340 DCT

4620N/M080F360 DCT 4730N DCT 4740N DCT 4650N/N0469F360 DCT

4460N/N0465F380 DCT WHALE DCT ACK J68 PVD DCT PARCH DCT

-KJFK0757 KBOS

-PBN/A1B3B4B5C4D4O4 NAV/RNVD1E2A1 DOF/140911 REG/N537SB EET/LECM0019

LPPO0137 EGGX0158 CZQX0314 CZQM0553 KZBW0700 KZNY0750 ORGN/KSBRUALF

PER/C RMK/AGCS 02.E360 03.D350 TCAS)

CAT 0012      LEBL/KJFK      05.SEP.2014/0646Z



\*\*\*\*\* NOTAMS \*\*\*\*\*

NOT      1    050646  
CAT 012/11

\*\*\*\*\* GENERAL NOTAMS \*\*\*\*\*

GENL

SB005/13 - IN RARE CASES, DETAILED MAP GENERATION HAS BEEN FAILING DUE TO AN "INSUFFICIENT MEMORY" ERROR. THIS OCCURS WHEN THE WEB HOST REDUCES THE MAXIMUM ALLOWABLE SCRIPT MEMORY FOR ONE REASON OR ANOTHER. WHILE THESE OUTAGES ARE NORMALLY SHORT LIVED, I WILL CONTINUE TO MONITOR THE LOGS TO MAKE SURE THEY DON'T BECOME TOO COMMON.

SB/05DEC13

SB004/13 - WHILE WIND FETCH ERRORS ARE RARE, PILOTS SHOULD STILL BE AWARE OF THEIR NEGATIVE EFFECT ON FLIGHT PLAN ACCURACY. "WARNING: WIND FETCH FAILED, ASSUMED ISA CONDITIONS" WILL BE DISPLAYED ON ANY FLIGHT PLAN WHICH FAILS TO DOWNLOAD THE WINDS ALOFT. THE RESULTING FLIGHT PLAN WILL BE LESS ACCURATE AS THE SYSTEM WILL REVERT TO A STANDARD ATMOSPHERE MODEL. IT IS RECOMMENDED TO RE-GENERATE THE FLIGHT PLAN WHEN SUCH AN ERROR OCCURS TO OBTAIN A MORE ACCURATE OFP.

SB/05OCT13

SB003/13 - ALL FLIGHT CREW: PLEASE PAY SPECIAL ATTENTION TO THE UNITS SELECTION WHEN GENERATING A FLIGHT PLAN. FAILURE TO IDENTIFY THE CORRECT UNITS WHEN REFUELING PRIOR TO FLIGHT CAN RESULT IN DEPARTING WITH INSUFFICIENT FUEL AND/OR AN ERRONEOUS PAYLOAD.

SB/13JUL13

\*\*\*\*\* FLIGHT NOTAMS \*\*\*\*\*

NONE

\*\*\*\*\* AIRCRAFT NOTAMS \*\*\*\*\*

P537 - NONE REPORTED

\*\*\*\*\* EQUIPMENT NOTAMS \*\*\*\*\*

B757-200

NONE



## \*\*\*\*\* COMPUTER FLIGHT PLAN \*\*\*\*\*

FLIGHT	DAY	ORG	DEST	ALTN	ACFT TYPE	ENGINES	AC
012	11	LEBL	KJFK	KBOS	B757-200	ALL	537

SPEED SCHEDULES CLIMB 290.M80 CRZ M80 DESCENT M80.290 RT D

	FUEL	TIME	OEW	1325	LIMIT	COST INDEX	M.80
BURN	0609	07.57	PYLD	0329		FCST .... / ....	
ALTN KBOS	0050	00.34	ZFW	1654	1840	DRAG/FF P0.0	P0.0
RSV 10PCT	0039	00.33	FOB	0756	0756	AVG W/COMP	M031
RSV 45MIN	0047	00.45					
CONT	0000	00.00	TOW	2400	2400	AVG OAT	P07
ETOPS ADD	0000	00.00	BURN	0609		ADL BO/1000	0314
MIN FUEL	0746	09.51	LGW	1791	1980	OUT 17.14Z OFF	17.24Z
TAXI	0010	00.10	FUEL OVER DEST	0137	1.53	.....	.....
EXTRA	0000	00.00	FUEL OVER ALTN	0087	1.18	ON 01.21Z IN	01.27Z
GATE FUEL	0756	10.01				.....	.....

ARP APT ORG PT N41 17.8 / E002 04.7

## ALTITUDE PROFILE

LEBL/0340/4620N/0360/4460N/0380/

LEBL..LOBAR.UN725.SUSOS..STG..KOPAS..4620N..4730N..4740N..4650N..  
4460N..WHALE..ACK.J68.PVD..PARCH..KJFK

TO	LAT.	LONG.	TRP	OA	DIST	ACTM	TM	RETA	FUEL
FREQ	FL	M/C	M/H	T/C	T/H	WIND	COMP	TAS	G/S
LEBL	.	.	.	.	.	.	.	.	.
	3359	07.57							0010
LOBAR	N41 44.9	E000 19.1	40	45	084	00.14	0.14		0054
	CL 290	290 289	289	29038	M038	3275	07.43		0692
									FUEL TEMP M02.7
DIRMU	N41 47.1	E000 09.6	40	48	007	00.15	0.01		0003
	CL 288	288 287	287	29038	M038	3268	07.42		0688
									FUEL TEMP M02.9
TOC	N41 49.5	W000 00.7	40	48	008	00.16	0.01		0004
	CL 287	287 287	287	29038	M038	3260	07.40		0685
RMNG WGT-	2253	ISA-	P05	KIAS-	278	MACH-	.800		
									FUEL TEMP M03.1
RVSM ALTIMETER CHECK									
CAPT.....				STBY.....				F/O.....	
VAKIN	N41 54.3	W000 21.2	40	48	016	00.19	0.03		0003
	34 287	287 287	287	29038	M038	468	430	3244	07.38
RMNG WGT-	2250	ISA-	P05	KIAS-	278	MACH-	.800		
									FUEL TEMP M03.5
ZARKO	N42 00.3	W000 47.6	40	48	021	00.22	0.03		0004
	34 288	288 287	287	28037	M037	468	431	3223	07.35
RMNG WGT-	2246	ISA-	P05	KIAS-	278	MACH-	.800		
									FUEL TEMP M04.0



```

LARDA      N42 07.9 W001 21.7      40  48      026 00.25 0.03      0005
           34 287 287 286 286 28037 M037 468 431 3197 07.32      0673
RMNG WGT- 2241      ISA- P05  KIAS- 278  MACH- .800
                                           FUEL TEMP M04.7
- - - - -
VASUM      N42 16.3 W002 00.7      40  48      030 00.29 0.04      0006
           34 287 287 286 286 28038 M038 468 430 3167 07.28      0667
RMNG WGT- 2236      ISA- P05  KIAS- 278  MACH- .800
                                           FUEL TEMP M05.4
- - - - -
DGO        N42 27.2 W002 52.8      41  48      040 00.35 0.06      0007
112.60 34 288 287 286 285 28038 M038 468 430 3127 07.22      0660
RMNG WGT- 2228      ISA- P05  KIAS- 278  MACH- .800
                                           FUEL TEMP M06.4
- - - - -
RATAS      N42 34.5 W004 01.8      40  48      051 00.42 0.07      0009
           34 280 279 278 277 27035 M035 468 433 3076 07.15      0650
RMNG WGT- 2219      ISA- P05  KIAS- 278  MACH- .800
                                           FUEL TEMP M07.5
- - - - -
NUBLO      N42 40.0 W004 59.3      40  48      043 00.48 0.06      0008
           34 279 278 277 276 26036 M035 468 433 3033 07.09      0643
RMNG WGT- 2211      ISA- P05  KIAS- 278  MACH- .800
                                           FUEL TEMP M08.5
- - - - -
SUSOS      N42 42.4 W005 26.6      40  48      020 00.51 0.03      0004
           34 279 278 277 276 26036 M035 468 433 3013 07.06      0639
RMNG WGT- 2207      ISA- P05  KIAS- 278  MACH- .800
                                           FUEL TEMP M08.9
- - - - -
STG         N42 55.6 W008 25.5      40  48      132 01.09 0.18      0024
116.40 34 279 276 276 273 24041 M033 468 435 2881 06.48      0615
RMNG WGT- 2183      ISA- P05  KIAS- 278  MACH- .800
                                           FUEL TEMP M11.5
- - - - -
KOPAS      N44 00.0 W013 00.0      39  49      209 01.37 0.28      0037
           34 294 289 289 284 23042 M021 467 446 2672 06.20      0578
RMNG WGT- 2146      ISA- P04  KIAS- 278  MACH- .800
                                           FUEL TEMP M15.1
FMC  POS RPT RQD AT ( KOPAS      )
- - - - -
4620N      N46 00.0 W020 00.0      36  51      320 02.19 0.42      0054
           34 302 300 294 292 22013 M003 465 462 2352 05.38      0524
RMNG WGT- 2093      ISA- P02  KIAS- 278  MACH- .800
ALTITUDE CHANGE TO FL 360 - 0000 MILES / 00.00 MINUTES AFTER - 4620N
                                           FUEL TEMP M19.7
- - - - -
4730N      N47 00.0 W030 00.0      44  49      417 03.13 0.54      0068
           36 294 298 281 285 00036 M008 467 459 1935 04.44      0456
RMNG WGT- 2024      ISA- P08  KIAS- 266  MACH- .800
                                           FUEL TEMP M20.0
FMC  POS RPT RQD AT ( 4730N      )
- - - - -
4740N      N47 00.0 W040 00.0      45  49      409 04.12 0.59      0071
           36 289 285 273 269 23058 M047 467 420 1526 03.45      0385
RMNG WGT- 1953      ISA- P08  KIAS- 266  MACH- .800
                                           FUEL TEMP M20.0

```



```

- - - - -
4650N      N46 00.0 W050 00.0      51  47      417 05.12 1.00  0073
          36 283 284 265 266 28057 M056 469 413 1109 02.45      0312
RMNG WGT- 1880   ISA- P10  KIAS- 266  MACH- .800
                                FUEL TEMP  M18.0
FMC  POS RPT RQD AT ( 4650N      )
- - - - -
4460N      N44 00.0 W060 00.0      47  47      441 06.16 1.04  0074
          36 275 281 257 263 30070 M054 469 415 0668 01.41      0237
RMNG WGT- 1806   ISA- P10  KIAS- 266  MACH- .800
ALTITUDE CHANGE TO FL 380 - 0000 MILES / 00.00 MINUTES AFTER - 4460N
                                FUEL TEMP  M18.0
- - - - -
WHALE      N42 11.9 W067 00.0      49  51      325 07.00 0.44  0048
          38 269 271 252 254 30028 M020 465 445 0343 00.57      0190
RMNG WGT- 1758   ISA- P06  KIAS- 254  MACH- .800
                                FUEL TEMP  M21.0
FMC  POS RPT RQD AT ( WHALE      )
- - - - -
ACK         N41 16.9 W070 01.6      50  50      146 07.19 0.19  0021
116.20  38 263 265 248 250 31016 M008 466 458 0197 00.38      0169
RMNG WGT- 1737   ISA- P07  KIAS- 254  MACH- .800
                                FUEL TEMP  M21.0
- - - - -
PVD         N41 43.5 W071 25.8      49  51      068 07.28 0.09  0010
115.60  38 308 308 293 293 29027 M027 465 438 0129 00.29      0159
RMNG WGT- 1727   ISA- P06  KIAS- 254  MACH- .800
                                FUEL TEMP  M21.2
- - - - -
TOD         N41 37.3 W071 32.5      49  51      008 07.29 0.01  0001
          38 234 237 219 222 28028 M014      0121 00.28      0158
RMNG WGT- 1726   ISA- P06  KIAS- 254  MACH- .800
                                FUEL TEMP  M21.2
- - - - -
PARCH       N41 06.0 W072 07.2      50  21      041 07.35 0.06  0004
          DC 233 235 219 221 30013 M002      0080 00.22      0154
                                FUEL TEMP  M20.0
- - - - -
KJFK        N40 38.4 W073 46.7      52  18      080 07.57 0.22  0017
          DC 263 263 250 250 26008 M008      0000 00.00      0137
                                FUEL TEMP  M15.2
- - - - -

```

ALTERNATE FLIGHT PLAN WIND P009 LRC DIST 0162 TIME 0.34 BURN 0050  
KJFK..KBOS

```

TO          LAT. . . LONG. . .      TRP  OA      DIST ACTM TM RETA FUEL
FREQ        FL M/C M/H T/C T/H WIND  COMP TAS  G/S  DRMG TRMG ETA ATA FRMG
KBOS         N42 21.8 W071 00.4      49   16      162 00.34 0.34  0050
          23 063 060 049 046 29021 P009 388 397 0000 0.00      0087
- - - - -

```

-PBN/A1B3B4B5C4D4O4 NAV/RNVD1E2A1 DOF/140911 REG/N537SB EET/LECM0019  
LPPO0137 EGGX0158 CZQX0314 CZQM0553 KZBW0700 KZNY0750 ORGN/KSBRUALF  
PER/C RMK/AGCS 02.E360 03.D350 TCAS)



- - - - -



## W I N D      S U M M A R Y      T R O P O P A U S E

WPT	FL	TEMP	WIND	COMP	ISA	LVL	TEMP
TOC	380	M56	29/039	M39	P01	402	M58
	360	M52	29/039	M39	P05		
	340	M48	29/038	M38	P05		
	320	M43	29/038	M38	P06		
	300	M38	28/037	M37	P07		
VAKIN	380	M56	29/039	M39	P01	402	M58
	360	M52	29/039	M39	P05		
	340	M48	29/038	M38	P05		
	320	M43	29/038	M38	P06		
	300	M38	28/037	M37	P07		
ZARKO	380	M56	28/039	M39	P01	402	M58
	360	M52	28/038	M38	P05		
	340	M48	28/037	M37	P05		
	320	M43	28/035	M35	P06		
	300	M38	28/034	M34	P07		
LARDA	380	M56	28/039	M39	P01	402	M58
	360	M52	28/038	M38	P05		
	340	M48	28/037	M37	P05		
	320	M43	28/035	M35	P06		
	300	M38	28/034	M34	P07		
VASUM	380	M56	28/039	M39	P01	403	M58
	360	M52	28/038	M38	P05		
	340	M48	28/038	M38	P05		
	320	M43	28/036	M36	P06		
	300	M38	28/034	M34	P07		
DGO	380	M56	28/040	M40	P01	405	M58
	360	M52	28/039	M39	P05		
	340	M48	28/038	M38	P05		
	320	M43	28/037	M36	P06		
	300	M38	27/035	M34	P07		
RATAS	380	M56	27/040	M40	P01	403	M58
	360	M52	27/037	M37	P05		
	340	M48	27/035	M35	P05		
	320	M43	27/034	M33	P06		
	300	M38	27/033	M32	P07		
NUBLO	380	M56	26/041	M40	P01	404	M58
	360	M52	26/039	M38	P05		
	340	M48	26/036	M35	P05		
	320	M43	26/035	M33	P06		
	300	M38	26/033	M31	P07		
SUSOS	380	M56	26/041	M40	P01	404	M58
	360	M52	26/039	M38	P05		
	340	M48	26/036	M35	P05		
	320	M43	26/035	M33	P06		
	300	M38	26/033	M31	P07		
STG	380	M55	24/045	M37	P02	401	M57
	360	M52	24/043	M35	P05		
	340	M48	24/041	M33	P05		
	320	M43	24/038	M30	P06		
	300	M38	23/035	M27	P07		
KOPAS	380	M54	23/035	M17	P03	389	M55
	360	M51	23/038	M18	P06		
	340	M49	23/042	M21	P04		
	320	M44	22/038	M17	P05		



	300	M39	22/034	M14	P06		
4620N	380	M51	26/006	M05	P06	364	M51
	360	M51	23/009	M04	P06		
	340	M51	22/013	M03	P02		
	320	M46	22/008	M03	P03		
	300	M41	25/004	M03	P04		
4730N	400	M57	36/034	M08	P00	442	M62
	380	M54	36/036	M09	P03		
	360	M49	00/036	M08	P08		
	340	M45	00/035	M07	P08		
	320	M41	01/034	M04	P08		
4740N	400	M56	23/052	M41	P01	446	M60
	380	M53	23/056	M44	P04		
	360	M49	23/058	M47	P08		
	340	M45	24/060	M49	P08		
	320	M41	24/052	M44	P08		
4650N	400	M50	28/059	M57	P07	507	M56
	380	M49	28/059	M57	P08		
	360	M47	28/057	M56	P10		
	340	M46	27/055	M54	P07		
	320	M44	27/053	M53	P05		
4460N	400	M54	30/068	M55	P03	474	M63
	380	M50	30/070	M56	P07		
	360	M47	30/070	M54	P10		
	340	M43	30/071	M51	P10		
	320	M39	29/067	M55	P10		
WHALE	420	M59	29/029	M22	M02	492	M65
	400	M55	30/030	M22	P02		
	380	M51	30/028	M20	P06		
	360	M46	29/024	M18	P11		
	340	M42	29/020	M16	P11		
ACK	420	M59	29/015	M11	M02	496	M65
	400	M55	31/016	M09	P02		
	380	M50	31/016	M08	P07		
	360	M46	31/016	M09	P11		
	340	M42	30/016	M10	P11		
PVD	420	M59	29/027	M27	M02	492	M65
	400	M55	29/027	M27	P02		
	380	M51	29/027	M27	P06		
	360	M47	29/026	M26	P10		
	340	M43	29/026	M26	P10		
TOD	420	M59	28/027	M13	M02	493	M65
	400	M55	28/028	M14	P02		
	380	M51	28/028	M14	P06		
	360	M47	28/027	M13	P10		
	340	M43	28/025	M11	P10		

FLIGHT PLAN VALID FOR DEPARTURE UNTIL 2314Z 11/09/14 RC 810821 PLAN0101



\*\*\*\*\* WEATHER SUMMARY \*\*\*\*\*

\*\* WEATHER FOR FLIGHT 0012

\*\*\*\*\*

DEPARTURE WEATHER/NOTAMS/FORECASTS

\*\*\*\*\*

JWCW CO 01 0012 11 BCN JFK

JWCW CO01 0012/11 BCN JFK /

JWWS S BCN JFK BOS

050600Z

LEBL 050630Z 05004KT 9999 FEW028 23/21 Q1014 NOSIG

LEBL 050602Z 0506/0606 14005KT 9999 SCT018 TX27/0512Z TN23/0506Z

BECMG 0508/0511 11009KT

PROB40

TEMPO 0512/0521 FEW025CB

TEMPO 0516/0520 06010KT

BECMG 0519/0521 VRB04KT

KJFK 050633Z 24007KT 10SM FEW009 SCT250 22/20 A3016 RMK AO2

KJFK 050528Z 0506/0612 21006KT P6SM FEW080

FM050700 VRB04KT P6SM SKC

FM051300 18008KT P6SM FEW250

FM051800 17015KT P6SM SCT040

FM060100 20008KT P6SM FEW010 SCT040

FM060800 22006KT P6SM SCT010 BKN035

KBOS 050554Z 24009KT 10SM CLR 23/16 A3013 RMK AO2 SLP203 T02280156

10267 20222 53001

KBOS 050540Z 0506/0612 23008KT P6SM FEW250

FM051800 21012KT P6SM FEW250

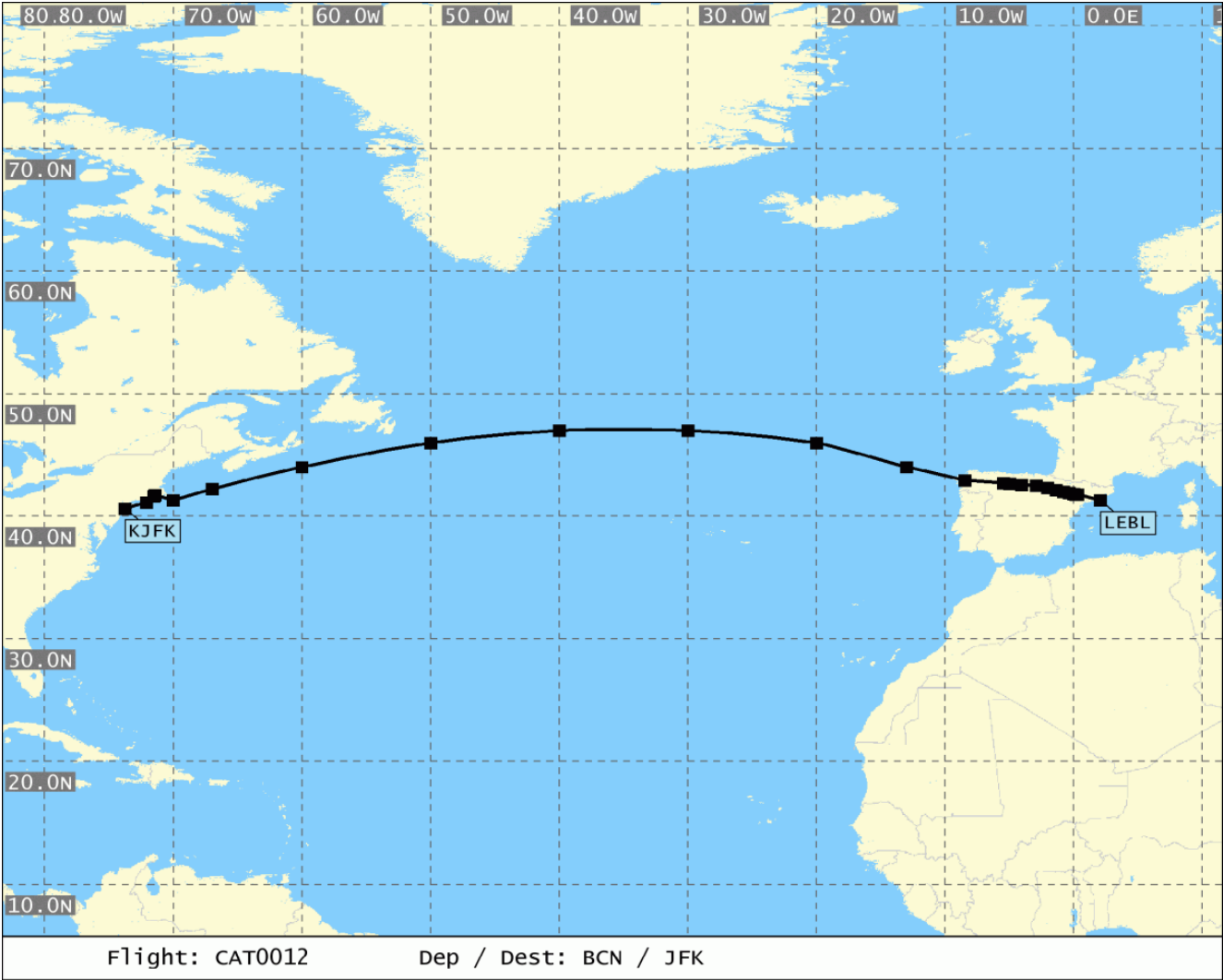
FM060500 22010KT P6SM FEW010

FM060900 22007KT 6SM BR SCT010

\*\* END OF WEATHER \*\*

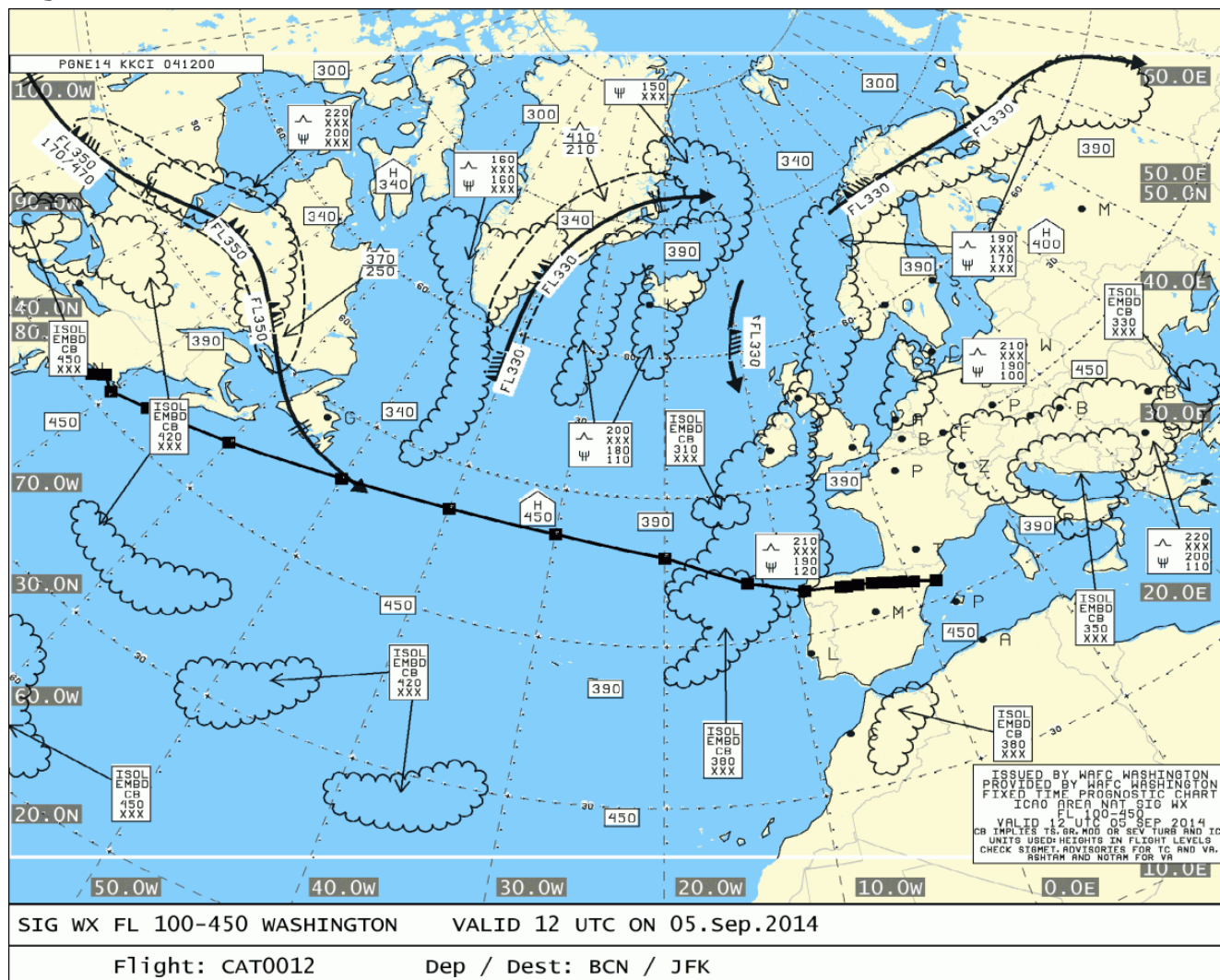


Route





SigWx 1 of 1

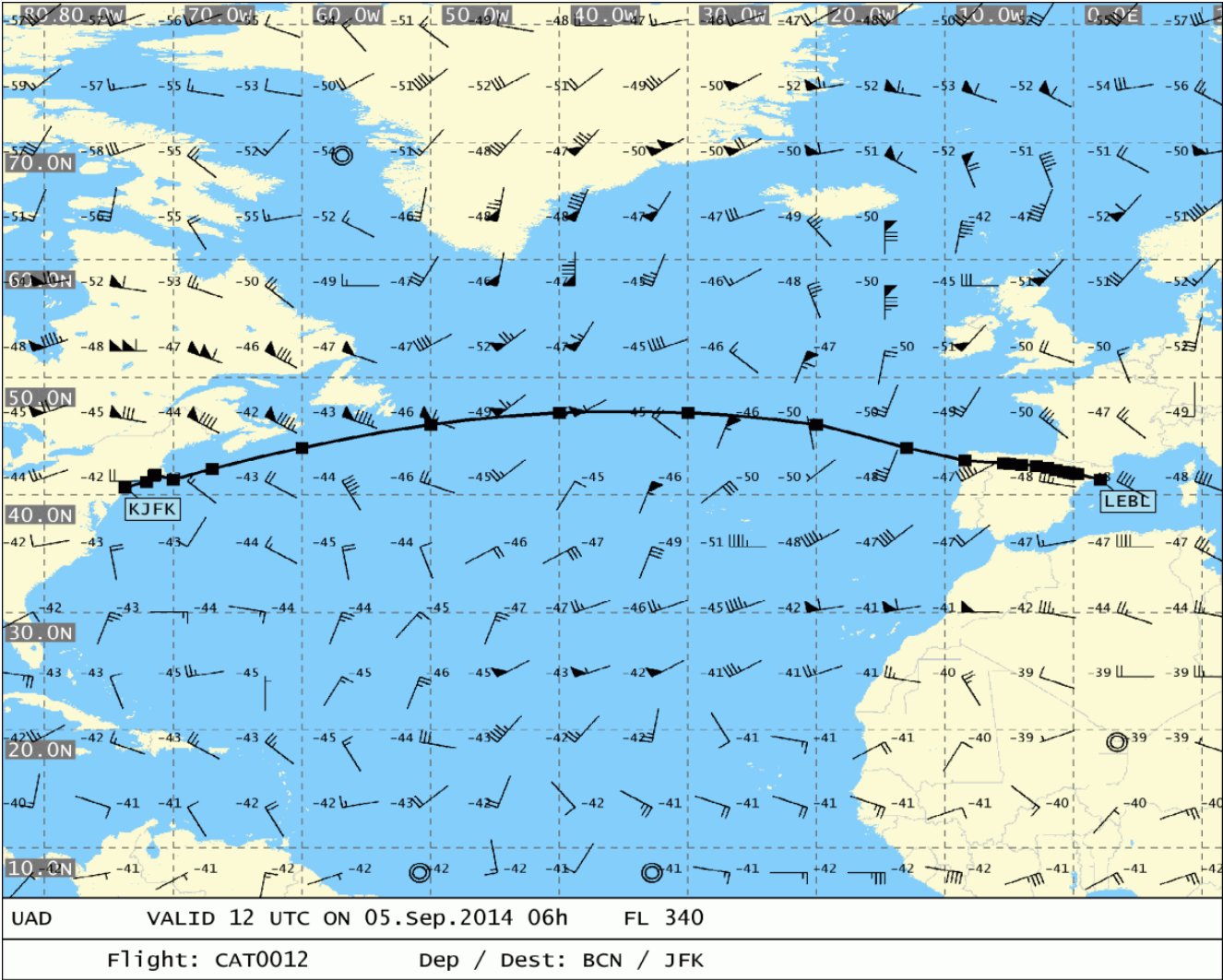


SIG WX FL 100-450 WASHINGTON      VALID 12 UTC ON 05.Sep.2014

Flight: CAT0012 Dep / Dest: BCN / JFK



UAD 1 of 2





UAD 2 of 2

